

Table of Contents

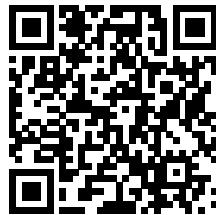
- Colour bleeding** 3
 - Step 1 - Issue description 4
 - Step 2 - Fix (newer version) 5
 - Step 3 - Fix (older version) 6

Colour bleeding



help.prusa3d.com/g108248

Scan the QR code to
display the latest
version of this
chapter.

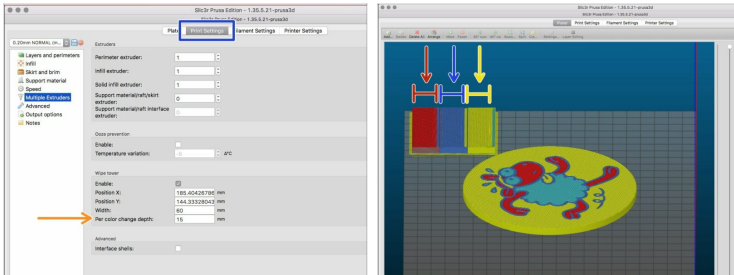


STEP 1 Issue description



- i** This guide is obsolete. For more info on this topic, please see Purging volumes (MMU).
- ◆** Issue is well known that it leaves traces of previously used colour in each layer as you can see in the picture.
- i** For some filaments or color combinations (such as black color together with white color) additional wipe area might be needed. The default value works with most materials and color combinations.

STEP 2 Fix (newer version)



- i** For this step you need Slic3r PE 1.35.1 or newer. Software is part of drivers package prusa3d.com/drivers/
- 🟦** Open Slic3r PE with your model and switch to tab **"Print Settings"**.
- 🟠** Increase the value **"Per color change depth"** by few millimeters.
- 🟢** Process the G-code again and save it on your SD Card.
- i** Please keep in mind that increasing wipe width causes longer print times and higher material consumption.

STEP 3 Fix (older version)



- i** This step is no longer needed if you have installed Slic3r PE 1.35.1 or newer.
- ◆** Turn on "Advanced mode" by checking highlighted box.
- ◆** Increase "Width of wipe" by few millimeters.
- ◆** Process the G-code again.
- 📌** Please keep in mind that increasing wipe width causes longer print times and higher material consumption.
