

# Tabla de Contenido

## Cómo cambiar el cable principal (CORE One/+)

.....	3
Paso 1 - Introduction .....	5
Paso 2 - Tools necessary for this guide .....	6
Paso 3 - Moving the Z-axis .....	7
Paso 4 - Unloading filament .....	8
Paso 5 - Preparing the printer .....	9
Paso 6 - Top Cover Removal .....	10
Paso 7 - Removing the door .....	11
Paso 8 - Accessing the LoveBoard .....	12
Paso 9 - Disconnecting the hotend .....	12
Paso 10 - Disconnecting the fan cables .....	13
Paso 11 - Retirar el ventilador de capa .....	14
Paso 12 - Retirando la cubierta inferior .....	14
Paso 13 - Disconnecting the main cable .....	15
Paso 14 - Releasing the main cable .....	16
Paso 15 - Accessing the electronics .....	17
Paso 16 - Accessing the buddy board .....	18
Paso 17 - Unplugging the main cable .....	19
Paso 18 - Pushing the main cable inside .....	20
Paso 19 - Removing the Main-cable-clip .....	21
Paso 20 - Main cable: parts preparation .....	21
Paso 21 - Colocando el cable principal .....	22
Paso 22 - Plugging in the main cable .....	22
Paso 23 - Attaching the rear cover .....	23
Paso 24 - Montaje del ventilador de impresión .....	24
Paso 25 - Conectando los cables del Nextruder .....	25
Paso 26 - Covering the LoveBoard .....	26
Paso 27 - Leading the main cable .....	27
Paso 28 - Connecting the main cable .....	28
Paso 29 - Covering the xBuddy board .....	29
Paso 30 - Covering the cables .....	30
Paso 31 - Attaching the cable ties I. ....	30
Paso 32 - Attaching the cable ties II. ....	31

Paso 33 - Attaching the main cable clip .....	32
Paso 34 - ENCIENDE la impresora .....	33
Paso 35 - Final check .....	33

# Cómo cambiar el cable principal (CORE One/+)



[help.prusa3d.com/g1075166](https://help.prusa3d.com/g1075166)

**Escanea el código  
QR para ver la última  
versión de este  
capítulo.**

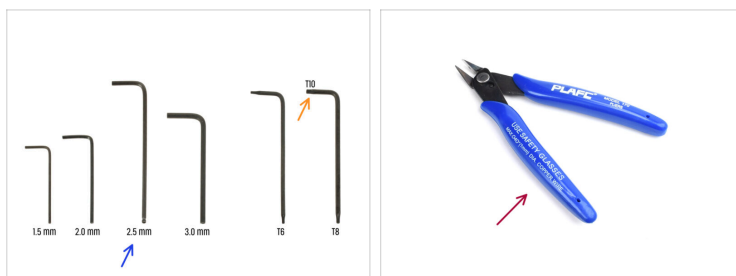


## PASO 1 Introduction



- Esta guía te guiará a través del **cambio del cable principal** en la **Prusa Core One/Core One+**.
- Todas las piezas necesarias están disponibles en nuestra tienda [prusa3d.com](https://prusa3d.com).
- 📌 Ten en cuenta que debes iniciar sesión para tener acceso a la sección de repuestos.
- ⓘ Note that there are two versions of the main cable. The wires can also be black and white. The replacement process is the same for both versions.

## PASO 2 Tools necessary for this guide



### ● Por favor prepara las herramientas para este guía:

- Llave Allen de 2.5mm
- Llave / Destornillador T10
- Alicates de corte plano - herramienta opcional, recomendada para cortar abrazaderas con mayor facilidad. Se puede adquirir en nuestra tienda online. [prusa3d.com](http://prusa3d.com).

## PASO 3 Moving the Z-axis



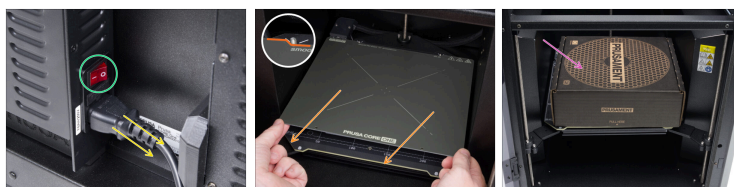
- i** Before you begin, move the heatbed to an accessible position.
- !** During this step, **keep the printer door closed and do not reach inside.**
- In the printer menu, go to **Control -> Auto Home.**
- After Auto Home, move the heatbed down via **Control -> Move Axis -> Move Z** until the highlighted screws and the underside of the heatbed are accessible (minimum 200 mm).
- i** This ensures both areas will be comfortably accessible during the procedure, as they will need to be handled later in the manual.


## PASO 4 Unloading filament








- **Asegúrate de que no haya filamento cargado en la impresora.**
- To unload the filament, go to the main menu, select **Filament**, and click on **Unload filament**.
- Descarga el filamento de la impresora.
- **Remove the filament spool** from the printer.

## PASO 5 Preparing the printer



 **Antes de comenzar, asegúrate de que la impresora se haya enfriado.**

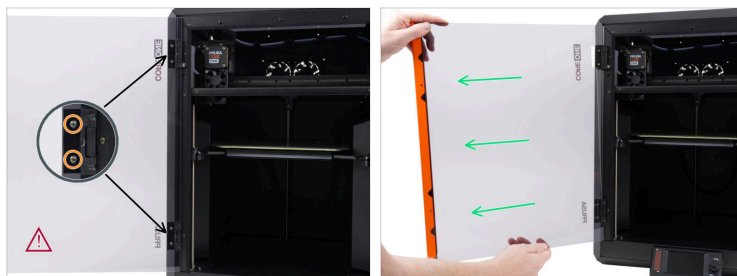
-  Apaga la impresora mediante el interruptor situado en la parte posterior.
-  Desconecta la impresora de la corriente.
-  Retira la lámina de acero.
-  Coloca una caja de cartón vacía (puedes usar una caja de Prusament) sobre la base calefactable para protegerla de posibles daños.
-  **Remove the USB drive** to prevent damage while handling the printer.

## PASO 6 Top Cover Removal



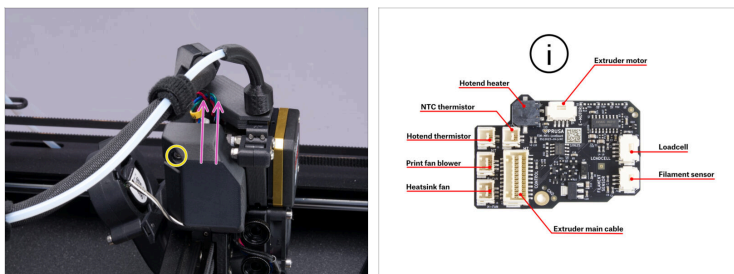
- Abre la impresora. Desde el interior, busca el remache de nylon situado en la parte delantera derecha de la cubierta superior. Empújalo hacia fuera para desbloquearlo.
- Retira el remache desde el exterior.
- Retira los remaches de nylon restantes de la cubierta superior utilizando la misma técnica.
- Retira la cubierta superior.

## PASO 7 Removing the door



- i** We highly recommend that you remove the door. This will make moving and turning the printer a lot easier and safer.
- 🔸** Using the T10 key, remove two M3x5rT screws securing the door panel in both hinges.
- ⚠️** Es imprescindible **sujetar bien el panel de la puerta** mientras se aflojan los tornillos para evitar que se caiga.
- 📌** Start removing the screws from the lowest.
- 🟢** Desliza con cuidado el panel de la puerta para sacarlo de las bisagras.
- 🟡** Place the door panel and the four screws in a clean and safe area to avoid any damage.

## PASO 8 Accessing the LoveBoard



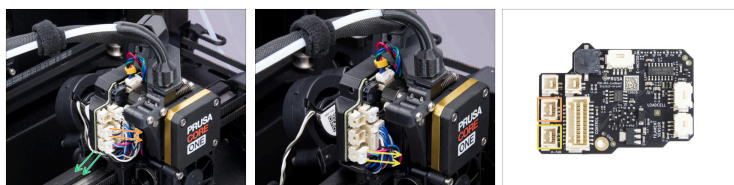
- Con la llave Allen de 2.5mm, retira el tornillo M3x10 que sujeta la Printhead-cover-left.
- Retira la Printhead-cover-left
- ⓘ Note the LoveBoard scheme for future reference.


## PASO 9 Disconnecting the hotend






- ⚠ **Es necesario pulsar la pestaña de seguridad antes de desconectar los cables. De lo contrario, se corre el riesgo de dañar el conector.**
- Desconecta el cable del calefactor del hotend.
- Desconecta el cable del termistor del hotend.

## PASO 10 Disconnecting the fan cables



 **Press the safety latch before disconnecting the cables.** Otherwise, you risk damaging the connector.

-  Press the safety latch and disconnect the print fan cable.
-  Pull the cable out of the ridge at the bottom and let it hang on the side.
-  Press the safety latch and disconnect the heatsink fan.

## PASO 11 Retirar el ventilador de capa



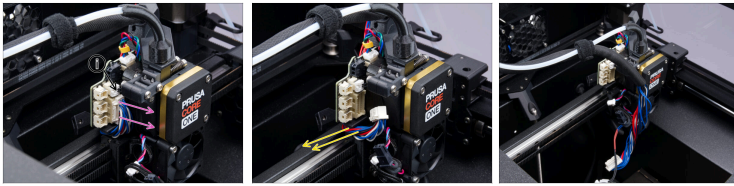
- En el otro lado del Nextruder, utiliza la llave Allen de 2.5 mm para quitar los dos tornillos M3x6.
- Retira la Printhead-cover-right.
- Utiliza la llave Allen de 2.5 mm para quitar el tornillo M3x20 que sujeta el ventilador de impresión.
- Retira el ventilador de capa.

## PASO 12 Retirando la cubierta inferior



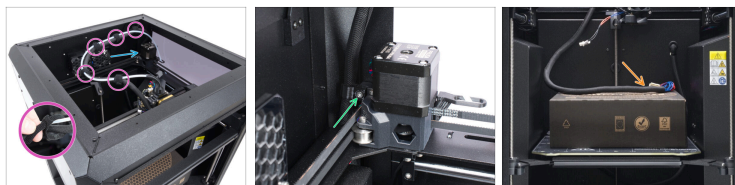
- Utiliza la llave Allen de 2.5 mm para quitar los dos tornillos M3x10 que sujetan la Printhead-cover-rear.
- Retira la Printhead-cover-rear.
- Dislodge the main cable from the channel on top of the Nextruder.

## PASO 13 Disconnecting the main cable



- ◆ Press the safety latch and disconnect the main cable.
- ⓘ Disconnecting the NTC thermistor cable is optional. Only do so if the cable is in the way.
- ◆ Move the main cable around the ridge under the LoveBoard.
- ◆ Leave the main cable hanging for now.

## PASO 14 Releasing the main cable



- ◆ Suelta las cinco bridas.
- ◆ Fíjate en la zona situada detrás del motor del eje Y, en el lado derecho de la impresora.
- ◆ Con una llave Allen de 2.5 mm, retira el tornillo M3x10 que sujeta el Main-cable-clip.
  - ⓘ Leave the Main-cable-clip attached to the main cable. Only remove the screw, so the inside of the printer does not get scratched.
- ◆ Place the main cable on the cardboard box on the heatbed.

## PASO 15 Accessing the electronics



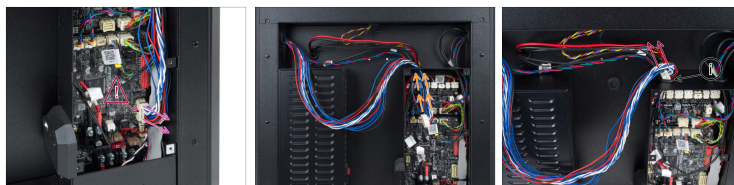
- En el interior, en el panel trasero de la impresora, retira los dos tornillos M3x4rT con la llave T10.
- En la parte posterior de la impresora, desliza la cubierta central hacia abajo.
- Make sure that all four pegs are removed from the back panel.
- Inclina con cuidado la cubierta y retírala de la impresora.







## PASO 16 Accessing the buddy board



- ◆ Use flush cutters to remove all zipties that secure the cables. **Be very careful not to cut any cables.**
- ◆ Using the T10 Key, remove all six M3x4rT screws securing the xBuddy box cover.
- ◆ Pull the xBuddy box cover towards you and remove it from the printer.
- ◆ Use flush cutters to remove three zipties that secure the cables inside the Buddy board case. **Be very careful not to cut any cables.**

## PASO 17 Unplugging the main cable



-  **The cable connector has a safety latch. It is necessary to **press the latch before disconnecting the cable.****
-  Press the safety latch and disconnect the main cable from the xBuddy board.
-  Route the main cable out of the xBuddy box through the opening at the top.
-  The Nextruder main cable may pass through either the right or left opening, depending on when the printer was assembled.
-  Turn the main cable sideways to remove it through the opening.
-  You can temporarily remove the plastic grommet to create more space for the cable to pass through. Be careful not to damage the cable connector.

## PASO 18 Pushing the main cable inside



- Route the main cable through the upper oval opening into the printer. Gently pull on the cable on the inside of the printer.
- Turn the main cable connector sideways and carefully push it through the opening.
- On the inside, push the main cable connector through the opening between the CoreXY assembly and the printer.
  - ⓘ It is a tight fit; be patient and careful. Push the connector from the bottom to help it get through.
- Once the main cable is free, remove it from the printer.

## PASO 19 Removing the Main-cable-clip



- ◆ Abre con mucho cuidado el Main-cable-clip. El plástico es flexible, pero podría romperse.
- ◆ Quita la Main-cable-clip y déjala a un lado. La necesitaremos más adelante.

---

## PASO 20 Main cable: parts preparation



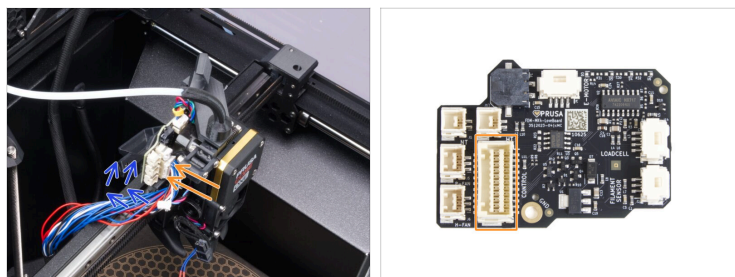
- ◆ Para los siguientes pasos, prepara:
  - ◆ Nuevo cable principal

## PASO 21 Colocando el cable principal



- ◆ Note that the cable sleeve is closer to the connector on one end. Use this end in the next step.
- ◆ Turn the main cable connector sideways and gently push it through the opening in the rear of the printer.
- ◆ On the inside, thread the main cable through an opening behind the CoreXY assembly in the right rear corner

## PASO 22 Plugging in the main cable



- ◆ Plug the main cable into the LoveBoard. Ensure that the safety latch clicks in place.
- ◆ Move the main cable through the ridge under the Love Board.

## PASO 23 Attaching the rear cover



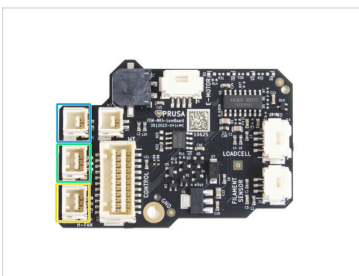
- ◆ Guide the main cable through the cable channel above the LoveBoard.
- ⓘ Twist the cable sleeve slightly to ensure that it will fit into the cable channel.
- ◆ El extremo de la funda textil debe quedar alineado con el borde de la pieza de plástico.
- ◆ Attach the Printhead-cover-rear.
- ⚠ **Ensure that no cables get pinched or damaged when attaching the Printhead-cover-rear.**
- ◆ Secure the Printhead-cover-rear in place with two M3x10 screws.

## PASO 24 Montaje del ventilador de impresión



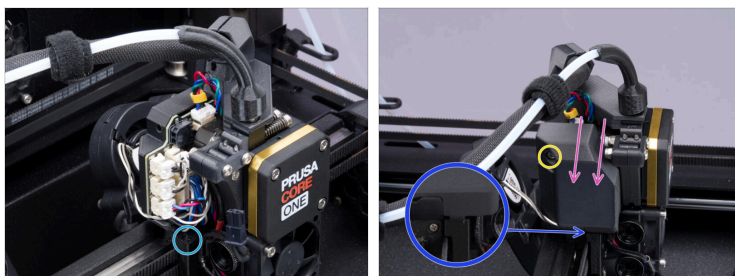
- Mount the print fan onto the Fan-shroud.
- Secure the print fan in place with the M3x20 screw.
- Loop the cable tie around the PTFE tube and main cable as shown in the photo.
- Aprieta la brida al máximo.
- Attach the Printhead-cover-right.
- Secure the Printhead-cover-right with two M3x6 screws.

## PASO 25 Conectando los cables del Nextruder



- Connect the hotend thermistor cable.
- Connect the print fan cable.
- Connect the hotend fan cable.
- ⚠ **Ensure that the safety latch clicks in place on each connector.**
- Push the print fan cable into the channel in the plastic cover.

## PASO 26 Covering the LoveBoard



- ◆ Note the slot on the bottom of the Nextrunder.
- ◆ Insert the protrusion on the underside of the Printhead-cover-left into the slot on the bottom of the Nextrunder.
- ◆ Attach the Printhead-cover-left.
- ◆ Secure the Printhead-cover-left with one M3x10 screw.

## PASO 27 Leading the main cable



- ◆ You can lead the new main cable through either the right or left opening in the xBuddy case. We will leave this to your preference.
- ◆ Turn the main cable connector sideways to insert it through the opening.
- ⓘ You can temporarily remove the rubber grommet to create more space for the cable to pass through. Be careful not to damage the cable connector.
- ◆ Once the main cable connector is through, pull it in all the way towards the connector in the xBuddy board.

## PASO 28 Connecting the main cable



- ◆ Connect the main cable to the xBuddy board
- ⚠ Ensure that the safety latch clicks in place to secure the main cable connector to the xBuddy board.
- ◆ Secure the cables with three zip ties. Carefully cut the excess; **avoid cutting the cables.**

## PASO 29 Covering the xBuddy board



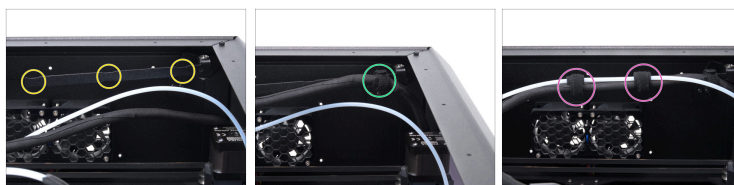
- ◆ Cubre con cuidado la caja xBuddy deslizando primero la parte doblada de la cubierta dentro de la caja.
- ◆ Avoid pinching the cables, and make sure the cover is inserted perpendicular to the xBuddyboard.
- ◆ Fija la tapa de la caja xBuddy con los seis tornillos M3x4rT.
- ◆ Wrap two zipties around the cable bundle on the top to keep the cables tidy and secured.
- 📌 Carefully cut the excess; avoid cutting the cables.

## PASO 30 Covering the cables



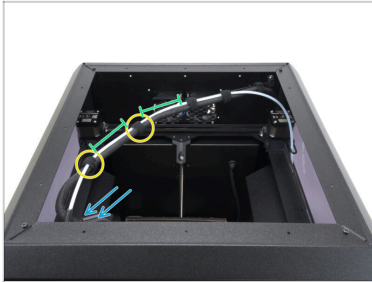
- ◆ Align the rear sheet metal cover so that the cables can run through the platform.
- ◆ Push the rear cable cover toward the printer, then move it upward.
- ◆ Ensure that the cable cover slides into the four openings in the printer rear cover.
- ◆ From the inside of the printer, secure the rear cover in place using two M3x4rT screws from inside the printer.

## PASO 31 Attaching the cable ties I.



- ◆ Note the three ridges on the swing arm in the top rear right corner.
- ◆ Tightly wrap the cable tie around the furthest ridge. **Do not include the PTFE tube.**
- ◆ Add two more cable ties, ensuring that you **include the PTFE tube** as shown in the pictures.

## PASO 32 Attaching the cable ties II.



- ◆ Move the Nextruder all the way to the front left corner to make sure that the main cable can reach all over the print area.
- ◆ Wrap the two remaining cable ties around the PTFE tube and main cable and tighten them.
- ◆ Leave a 10 cm (3.94 in) distance between the last two cable ties.

## PASO 33 Attaching the main cable clip



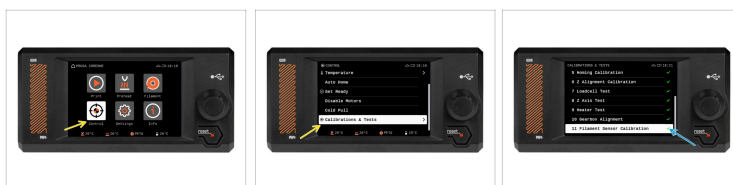
- (i)** We recommend adding the cable clip only once the new main cable is connected on both sides .
- ◆** Carefully open the Main-cable-clip. **Be careful not to snap the part in half.**
- ◆** Inserta el cable principal en el Main-cable-clip.
- ◆** Ensure the correct orientation of the Main-cable-clip. The side with the wider opening faces outward so the screw can be inserted.
- ◆** Secure the Main-cable-clip in place with the M3x10 screw.

## PASO 34 ENCIENDE la impresora



- ◆ Remove the box that is protecting the heatbed.
- ◆ Place the print sheet onto the heatbed. Align the rear cutout with the locking pins on the back of the heatbed.
- ◆ Connect the power cable and plug the printer into an outlet.
- ◆ Turn the print ON ("I" symbol).

## PASO 35 Final check



- ◆ We recommend testing the printer to make sure that the main cable was replaced successfully.
- ◆ In the main menu, select **Control -> Calibrations & Tests** and run the self test.
- ◆ Follow the on-screen instructions until all tests pass with a green check mark.
- ◆ Congratulations, you have successfully replaced the main cable.



---

---

---

---

---

---

---

---

---

---



---

---

---

---

---

---

---

---

---

---



---

---

---

---

---

---

---

---

---

---

