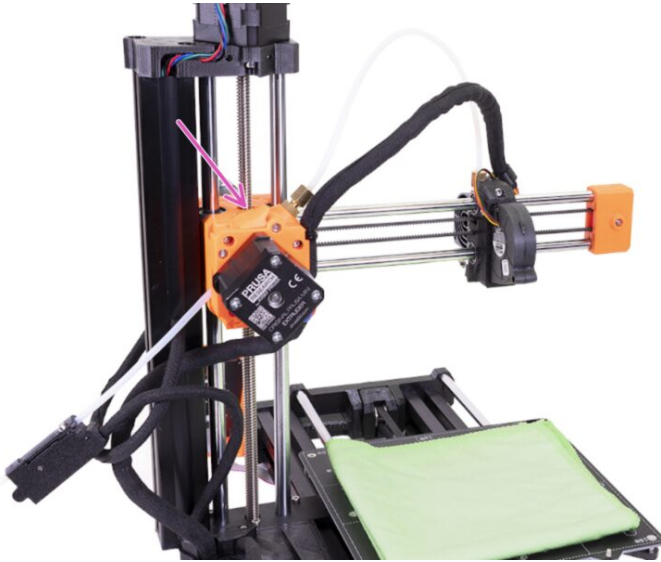


Table of Contents

How to access and clean the extruder-pulley (MINI/MINI+)	3
Step 1 - Introduction	4
Step 2 - Tools and fasteners necessary for this guide	5
Step 3 - Preparing the printer	6
Step 4 - Protecting the heatbed	7
Step 5 - Removing the bowden PTFE tube	7
Step 6 - Disassembly of the extruder	8
Step 7 - Disassembly of the extruder	8
Step 8 - Extruder surgery	9
Step 9 - Extruder surgery	9
Step 10 - Installing the pulley	10
Step 11 - Reassembly of the extruder	10
Step 12 - Mounting the extruder	11
Step 13 - Mounting the PTFE tubes	11

How to access and clean the extruder-pulley (MINI/MINI+)



help.prusa3d.com/g126457

Scan the QR code to
display the latest
version of this
chapter.



STEP 1 Introduction

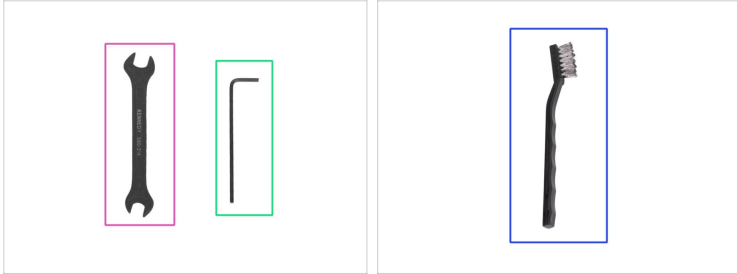


◆ This guide will take you through the access and clean the **extruder-pulley** on the **Original Prusa MINI** and **MINI+**.

ⓘ Some parts might slightly differ. However, it does not affect the procedure.

◆ **Before you proceed with the disassembly, make sure you have tried to clean the gears using the "inspection door" on the top.** See the MINI Handbook, Chapter "Regular Maintenance" available at prusa3d.com/drivers

STEP 2 Tools and fasteners necessary for this guide



◆ Wrench size 10 mm (1x)

◆ Allen key 2.5 mm (1x)

◆ Steel brush (1x)

◆ Cloth or piece of fabric 15x15cm (1x)

ⓘ The cloth will be used to protect the heatbed. You can use any similar material.

STEP 3 Preparing the printer



Make sure that:

- The filament is unloaded from the printer.
- The printer parts - print head and heatbed are cooled down at room temperature!!!
- The printer is turned off and unplugged from the socket.

STEP 4 Protecting the heatbed



Before you proceed, it is recommended to protect the heatbed.

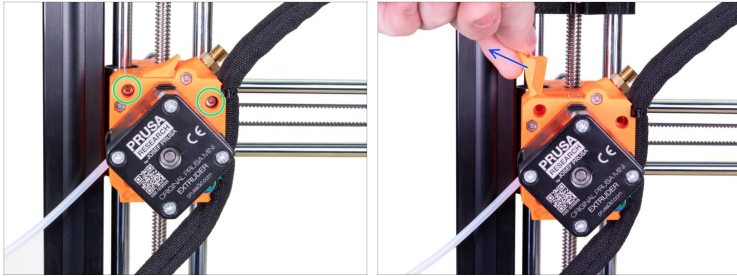
- Take off the flexible steel sheet.
- Use any cloth or piece of fabric, which is thick enough and cover the heatbed. This will ensure you won't damage (scratch) the surface during the disassembly.

STEP 5 Removing the bowden PTFE tube



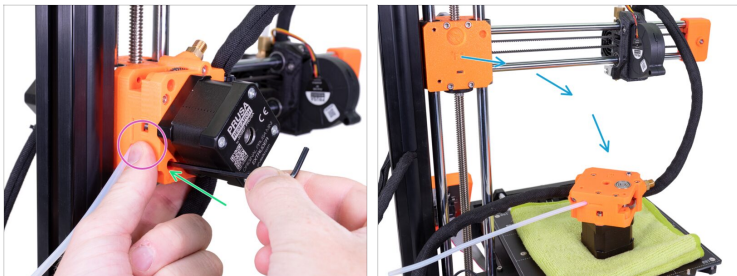
- Release the upper fitting and remove it together with the long PTFE tube from the extruder.

STEP 6 Disassembly of the extruder



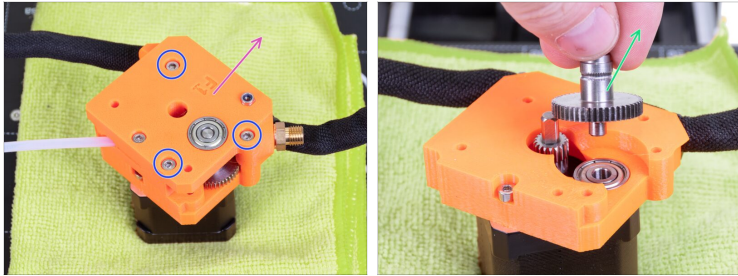
- ◆ Release and remove two screws from the extruder.
- ◆ Remove the inspection-door.
- ⓘ Keep all the removed fasteners and printed parts for later use.

STEP 7 Disassembly of the extruder



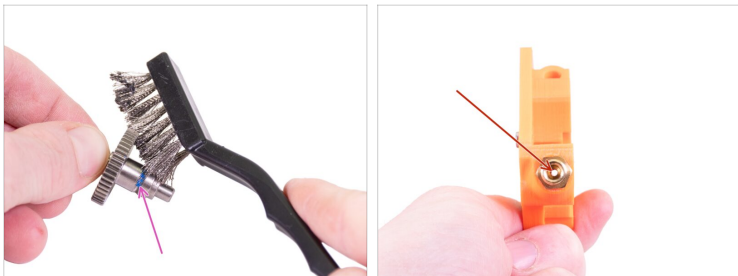
- ◆ Hold the extruder in your hand.
- ◆ Release and remove the lower screw.
- ◆ Carefully place the extruder on a piece of cloth on the heatbed so that the motor faces down.
- ⓘ If the extruder does not reach to the heatbed, move the Z-axis down or the X-axis closer. Do it manually, no need to turn the printer on.

STEP 8 Extruder surgery



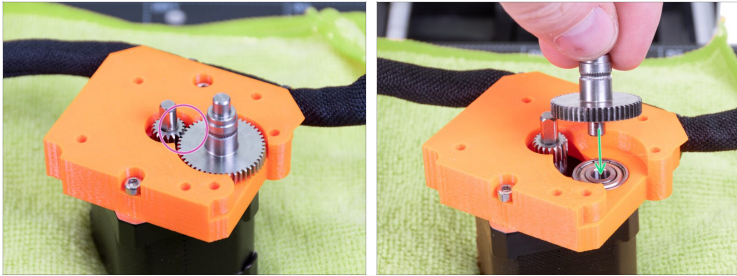
- ◆ Release and remove three screws on the top side of the extruder-rear part.
- ◆ Remove the extruder-rear.
- ◆ Pull out the pulley from the "extruder-front" part.

STEP 9 Extruder surgery



- ◆ Use the steel brush to remove filament residues in the jagged groove on the pulley.
- ◆ Check the "extruder-rear" part for any impurities in the filament hole.

STEP 10 Installing the pulley



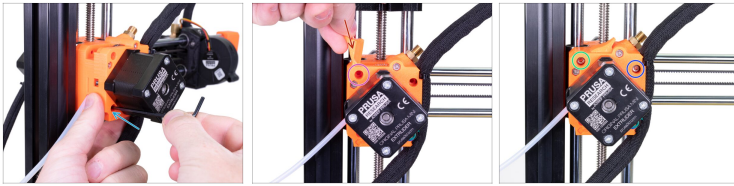
- Place the pulley back into the bearing. The longer part with the jagged groove must face up. See the picture.
- The gears must be aligned properly. Rotate with one pulley to ensure the second is moving as well.
- Make sure there are no filament residues and other debris around the gears. The area must be clean.

STEP 11 Reassembly of the extruder



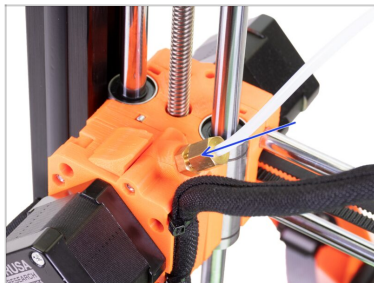
- Place the extruder-rear on the extruder-front part. Check the correct orientation of the parts as shown in the picture.
- The pulley shaft must fit in the bearing.
- Secure both parts with three M3x25 screws.

STEP 12 Mounting the extruder



- Place the extruder on the Z-carriage and secure it with the M3x25 screw in the lower hole.
- Place the inspection-door to the extruder.
- Make sure the holes are aligned.
- Secure it with the M3x25 screw, but don't overtighten. You have to be able to open the door.
- Insert and tighten the M3x25 screw into the right hole.

STEP 13 Mounting the PTFE tubes



- Mount the upper fitting with the PTFE tube and tighten it using the wrench. **Do not over-tighten the fitting, you might deform it!**
- Great job, it's done!**
- Heat the printer up and try it out ;)
