

Table of Contents

| | |
|--|----|
| How to update firmware (MINI/MINI+) | 3 |
| Step 1 - Introduction | 4 |
| Step 2 - Downloading the new firmware | 5 |
| Step 3 - Copying the new firmware | 6 |
| Step 4 - Flashing the new firmware | 7 |
| Step 5 - Flashing the new firmware | 8 |
| Step 6 - Downloading an old firmware | 9 |
| Step 7 - Copying the older firmware | 9 |
| Step 8 - Flashing the old firmware | 10 |
| Step 9 - Flashing the old firmware | 11 |

How to update firmware (MINI/MINI+)



help.prusa3d.com/g128421

Scan the QR code to
display the latest
version of this
chapter.

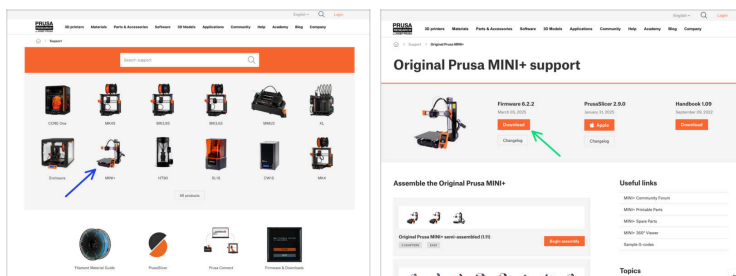


STEP 1 Introduction



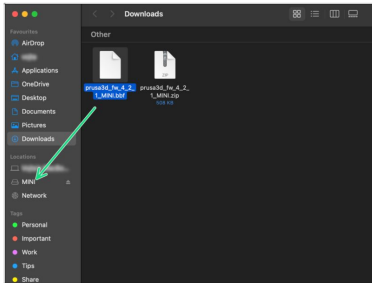
- ◆ This guide will take you through the **flashing the firmware** on the **Original Prusa MINI and MINI+**.
- ◆ There are two ways, how to flash a firmware to the MINI/MINI+:
 - ◆ **Upgrade to the new version**, follow:
Downloading the new firmware
 - ◆ **Downgrade to an older firmware**, follow
Downloading an old firmware

STEP 2 Downloading the new firmware



- i All shipped printer packages include a USB drive with the latest firmware. However, it is recommended to check and possibly upgrade the firmware version.
- Visit the help.prusa3d.com page.
- Navigate to the Prusa MINI+ page.
- Save the firmware file (*.bbf*) onto the bundled USB drive.
- i Pro tip: To access Prusa MINI+ homepage you can use the URL: prusa.io/MINI+

STEP 3 Copying the new firmware

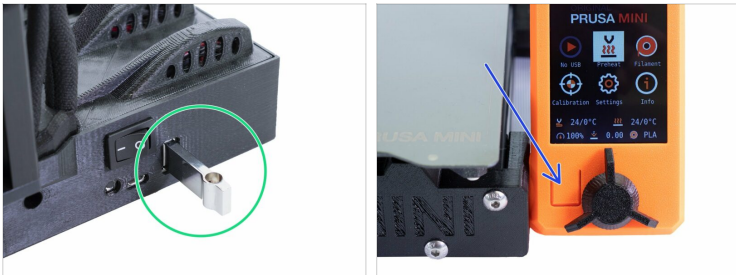


Insert the USB flash drive into your computer.

Drag & drop the unzipped file *prusa3d_fw_4_x_x_MINI.bbf* to the root directory on the USB flash drive.

i Make sure you don't have another installation (*.bbf*) file on the USB flash drive. G-codes and other files don't matter.

STEP 4 Flashing the new firmware



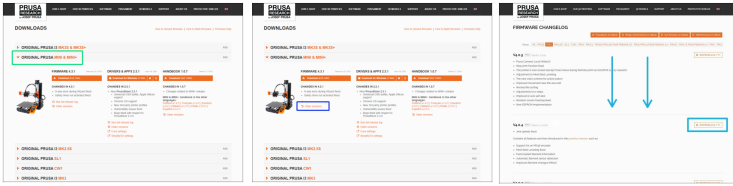
- Turn the printer ON.
- Insert the USB flash drive to the printer.
- Push the reset button.
- ① The printer will check automatically if a new firmware is available on the USB flash drive.

STEP 5 Flashing the new firmware



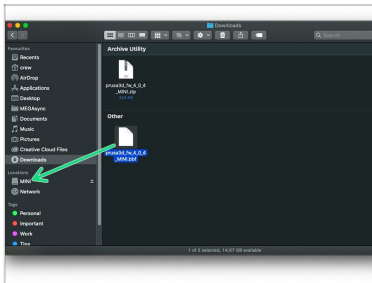
- ◆ Using the selector-knob press "FLASH" button on the LCD screen.
- ◆ Wait until the process is completed.
- ⚠ **Do not remove the USB flash-drive during the installation! This can fatally damage the electronics.**
- ◆ When the process is successfully completed, the printer will finish the boot and you will see the Home screen.
- ◆ **We are done here!** Your printer **with the new firmware** is ready to rock ;)
- ⓘ If the printer repeatedly boots to the home screen without showing the firmware update screen, please try to reformat your USB drive or try a different one.

STEP 6 Downloading an old firmware



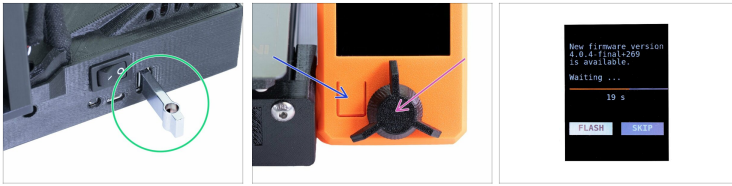
- Go to Prusa3D.com/drivers and select your printer.
- Click on Older versions.
- The firmware version list is sorted from the latest version. Scroll down to select and download an old version.

STEP 7 Copying the older firmware



- Insert the USB flash drive to your computer.
- Drag & drop the unzipped file *prusa3d_fw_4_x_x_MINI.bbf* to the root directory on the USB flash drive.
- i** Make sure you don't have another installation *file on the USB flash drive. G-codes and other files don't matter.*

STEP 8 Flashing the old firmware



- ◆ Insert the USB flash drive to the printer.
- ⬛ Turn the printer ON.
- ◆ Push the reset button.
- ◆ Immediately press and hold the selector-knob for 1-2 seconds. **It must be released before the "Verifying" screen appear!** When you release the button, you will be prompted to flash.
- ⓘ The printer automatically checks for firmware on the USB flash drive.

STEP 9 Flashing the old firmware



- ◆ Using the selector-knob press "FLASH" button on the LCD screen.
- ◆ Wait until the process is completed.
- ⚠ **Do not remove the USB flash-drive during the installation! This can fatally damage the electronics.**
- ◆ When the process is successfully completed, the printer will finish the boot and you will see the Home screen.
- ◆ **We are done here!** Your printer is ready ;)
- ⓘ If the printer repeatedly boots to the home screen without showing the firmware update screen, please try to reformat your USB drive or try a different one.
