

# Table of Contents

<b>How to replace the print display (SL1)</b> .....	3
Step 1 - Introduction .....	4
Step 2 - Tools necessary for this chapter .....	5
Step 3 - Preparing the printer .....	5
Step 4 - Removing the cover .....	6
Step 5 - Disconnecting the print display .....	7
Step 6 - Removing the print display .....	8
Step 7 - New print display - parts preparation .....	9
Step 8 - Installing the new print display .....	10
Step 9 - Fixing the display in place .....	11
Step 10 - Connecting the print display .....	12
Step 11 - Connecting the power button .....	13
Step 12 - Assembling the cover .....	14
Step 13 - Calibrating the new display - preparation .....	15
Step 14 - Calibrating the new display - Booting up the printer .....	16
Step 15 - Initiating the calibration process .....	17
Step 16 - Removing the tank and testing the display .....	18
Step 17 - Placing the UV meter and connect it to the printer .....	19
Step 18 - Calibration process .....	20
Step 19 - Applying the calibration results .....	21
Step 20 - Finished! .....	22



# How to replace the print display (SL1)



[help.prusa3d.com/g133295](https://help.prusa3d.com/g133295)

Scan the QR code to  
display the latest  
version of this  
chapter.

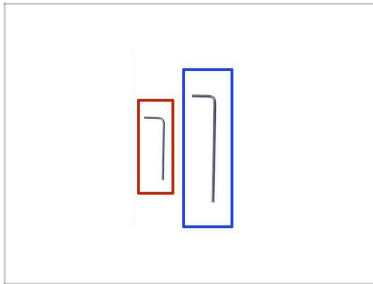


## STEP 1 Introduction



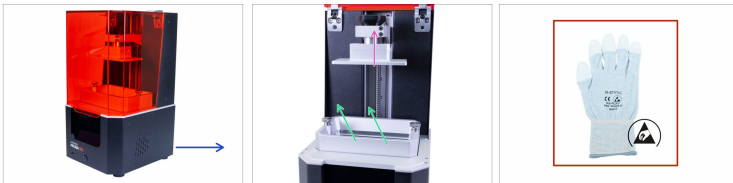
- i** This guide will take you through the replacement of the **print display** on the **Original Prusa SL1**.
- ◆** All necessary parts are available in our eshop <https://shop.prusa3d.com>.
- i** Note that you have to be logged in to have access to the spare parts section.
- ◆** If you are looking for the **SL1S SPEED print display replacement**, please follow this guide: How to replace the print display (SL1S)
- ⚠** **WARNING:** This device utilizes UV light, which can harm your eyesight or skin. Do not turn the device ON until it is fully reassembled with all the covers installed!!!

## STEP 2 Tools necessary for this chapter




- 2.0mm Allen key
- 2.5mm Allen Key

## STEP 3 Preparing the printer



### Before you start, do the following:

- Move the cantilever with the print platform up (Menu -> Control -> Home platform). *You will need more space in the following steps.*
- Remove the resin tank, if you have a resin inside, pour it back in the bottle.
- Turn the printer off and unplug it.
- Use ESD gloves (recommended)

 ESD gloves are anti-static (prevent damage to the electronics).

## STEP 4 Removing the cover

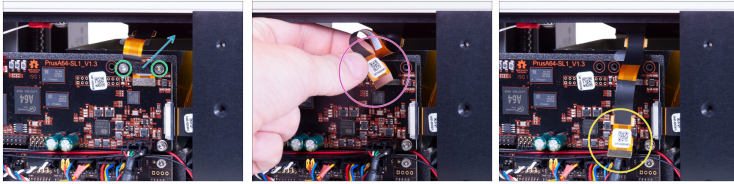


**⚠** Proceed carefully with these screws, preferably use an Allen key with straight sharp edges, there is a risk of stripping the screw's head.

- Turn the left side of the printer towards you.
- Locate, release and remove the four screws.
- Turn the printer 180° and remove the last four screws on the other side.
- Slide the cover just a few cm/inches out.

- i** There are two designs of USB and power button:
- **NEW DESIGN:** The USB and the power button have the same connector. Disconnect the cable and remove the cover completely.
  - **OLD DESIGN:** The USB and the power button are separated. Disconnect the power button cable from the extension cable and remove the cover completely.

## STEP 5 Disconnecting the print display



**⚠ WARNING:** be very careful while disconnecting the cable, you might damage both the cable and the board!

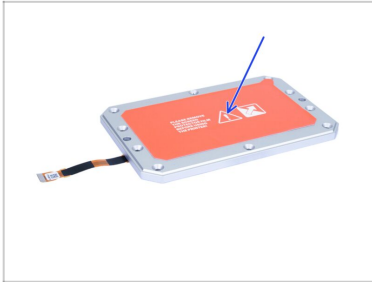
- ◆ Release and remove the M3x8 screws. Keep them for the reassembly.
- ◆ Remove the display cable holder.
- ◆ **GENTLY** pull the cable closest to the "silver rectangle" to disconnect the connector from the board. If possible you can use your nails to push the connector out. Don't use any tool like pliers or screwdriver.
- ◆ Leave the LCD cable free.

## STEP 6 Removing the print display



- ✦ Using an Allen key remove all 10 screws holding the display assembly. **Proceed carefully** as you might strip the screw.
- ⓘ Keep all the removed screws for a later use.
- ✦ Using your index finger push the display assembly up from below on the right side of the printer.
- ✦ Remove the display assembly.

## STEP 7 New print display - parts preparation



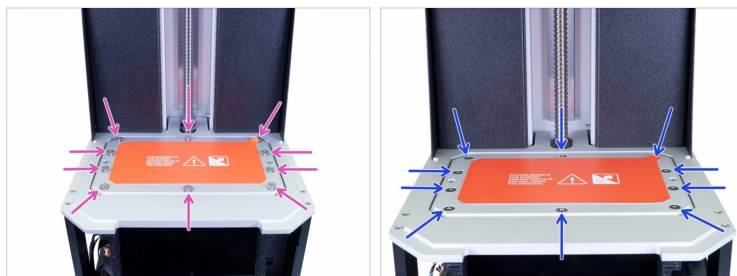
- ◆ **For the following steps, please prepare:**
- ◆ New print display assembly (1x)
- ⚠ **Be careful with the cable while assembling the display. Make sure it doesn't get pinched or bent.**
- ◆ **DON'T PEEL OFF THE PROTECTIVE FILMS!** Wait for the instructions!

## STEP 8 Installing the new print display



- ◆ Peel off the transparent protective film on the bottom side of the print display. **Do not touch on the LCD panel!**
- ◆ **DON'T PEEL OFF THE ORANGE PROTECTIVE FILM!** Wait for the instructions!
- ⚠ **WARNING:** make sure the cable leading from the print display is not bent or pinched before you tighten the screws. Always ensure the cable is alright.
- ◆ **Carefully insert the LCD assembly in the printer,** like in the picture. Make sure the cable is **ON THE LEFT** side and not bent.
- ◆ Carefully lay the assembly down, make sure it is aligned with the printer.

## STEP 9 Fixing the display in place



- ◆ Use the M4x14b countersunk screws to fix the LCD back in place. Don't tighten them, first make sure the LCD is seated properly.
- ◆ Now, tighten all 10 screws, gradually, **in a cross-pattern**, but with a reasonable force. You might strip the screw.

## STEP 10 Connecting the print display



**WARNING:** screen cables and connectors are fragile. Please proceed with extra caution.

- ◆ Connect the print display to the connector. Be careful with the alignment. You should hear/feel it click into place.
- ◆ Make sure the cable is facing to the "front" and not stuck between the reflector and the electronics holder.
- ◆ Secure the print display cable with the printed part. Be careful while tightening the M3x8 screws.

## STEP 11 Connecting the power button



- Slide the cover half-way to the printer and stop, we need to connect the front USB and power button first.
- **NEW DESIGN:** Look from above in the front cover and connect the USB & Power cable. Make sure the safety pin "clicks".
- **OLD DESIGN:** Connect the power cable button to the extension cable. Make sure the safety pin "clicks".

## STEP 12 Assembling the cover



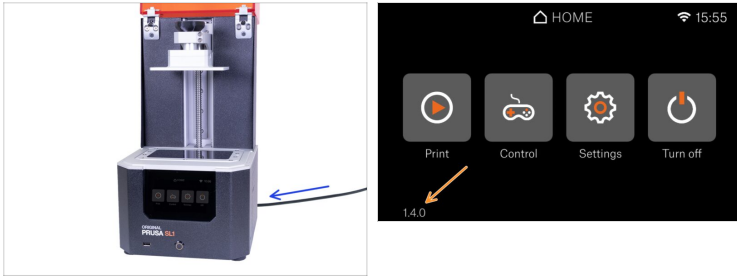
- ◆ Slide the cover on the printer and secure it on one side using two M3x5b countersunk screws. Don't tighten them firmly and move on the other side, repeat the procedure.
- ◆ As soon as the cover is aligned and partly secured, add the remaining screws and tighten them all.
- ◆ Turn the printer over (180 °) and use the same procedure.
- ◆ Remove the protective film from the print display.

## STEP 13 Calibrating the new display - preparation



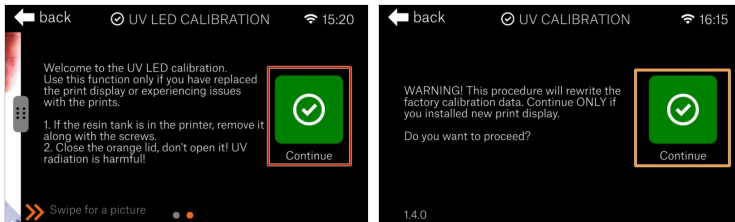
- ◆ **For the following steps, please prepare:**
- ◆ UV calibrator (1x)
- ◆ MicroUSB cable (1x)
- ⓘ Starting firmware 1.4.0, the system allows for user calibration of the UV light intensity, using an external UV calibrator. This action is required each time the print display is replaced for a new one.

## STEP 14 Calibrating the new display - Booting up the printer



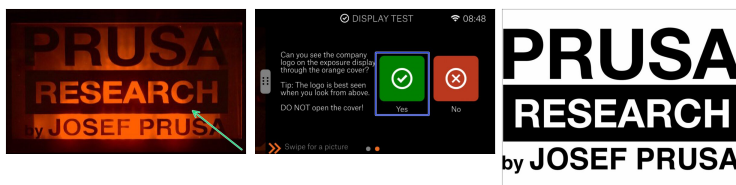
- Plug the printer in and turn it ON.
- Wait for the printer boot and display the Home screen, and verify you have firmware **version 1.4.0 or higher**. If you are on an older version of the firmware. please update it now.




## STEP 15 Initiating the calibration process



- 🛡️ Read the on-screen instructions carefully before clicking **Continue**.
- 🔗 Navigate the menu:  
**Firmware 1.4.2 and below:** *Settings -> Advanced settings -> UV & Display -> Display replacement.*  
**Firmware 1.5.0 and above:** *Settings -> calibration -> UV calibration.*
- 🛡️ You will receive a warning that the factory calibration data will be cleared. Select *Continue*.
- ⚠️ **Do not run this calibration unless you have changed the print display, or have consulted tech support.**

## STEP 16 Removing the tank and testing the display



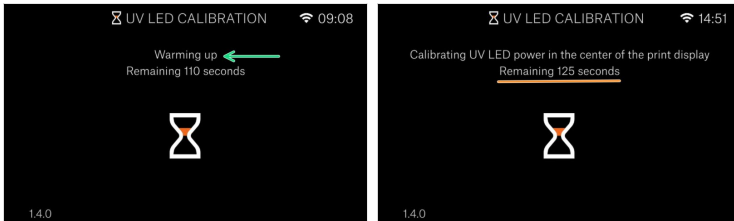
-  **Don't open the lid under any circumstances, keep it closed! The UV light inside will cause damage to your eyes.**
-  Looking from above, check the entire screen. You must be able to see our company logo in full. No parts (letters) should be missing.
-  Confirm the display is working by selecting Yes.

## STEP 17 Placing the UV meter and connect it to the printer



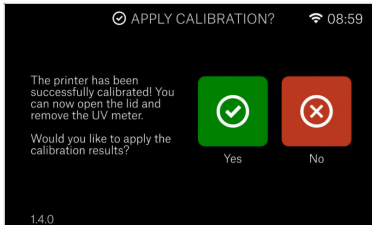
- Open the lid and place the UV calibrator on the display, with the photosensors towards the display. Make sure the guide pegs on the UV calibrator fit into the holes for the tank screws and that the calibrator lays flat against the display. Then plug in the USB cable.
- Close the lid carefully, with the cable from the UV meter coming out from above the touchscreen.
- Once you select continue, the calibration procedure will start.

## STEP 18 Calibration process



- The calibration process is completely automatic. It will inform you of its progress and current task. The whole procedure only takes a few minutes.
- The process starts by warming up the LED panel to a stable temperature, before calibrating the different areas of the display.
- You will be provided with an estimate on how much time is remaining of each part. Feel free to leave the printer and get some gummy bears. We are almost done:)

## STEP 19 Applying the calibration results



Once the calibration procedure is complete you will be asked if you want to apply the results.

**i** If you select "No", no change will be made and you will be taken back to the UV & Display Settings page

## STEP 20 Finished!



- ◆ Now, please read the **3D Printing Handbook** and follow the instructions to **calibrate the printer**. The latest version is always available at [prusa3d.com/3dhandbookSL1](https://prusa3d.com/3dhandbookSL1)
- ◆ **Congrats, your print display is successfully replaced** and you are ready to print!
- ⓘ Thanks to the calibration the printer is compatible with the resin presets in PrusaSlicer.



---

---

---

---

---

---

---

---

---

---



---

---

---

---

---

---

---

---

---

---



---

---

---

---

---

---

---

---

---

---