

Table of Contents

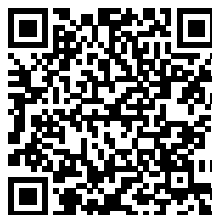
How to disassemble the CW1	3
Step 1 - Introduction	4
Step 2 - Tools necessary for this guide	4
Step 3 - Removing the lid	5
Step 4 - Removing the top cover	6
Step 5 - Removing the rear cover	7
Step 6 - Removing the top cover	8
Step 7 - Removing the top cover	9
Step 8 - CW-Controller connectors	10
Step 9 - CW-Controller connectors	11
Step 10 - Checking LCD cables connection	11
Step 11 - Mounting the top cover	12
Step 12 - Mounting the rear cover	12
Step 13 - Mounting the rear cover	13
Step 14 - Mounting the front cover	13
Step 15 - Securing the top cover	14
Step 16 - Mounting the lid	14
Step 17 - It's done!	15

How to disassemble the CW1



help.prusa3d.com/g134448


Scan the QR code to
display the latest
version of this
chapter.



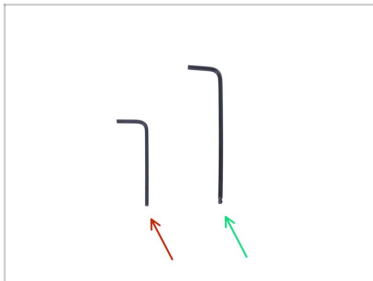
STEP 1 Introduction



- This guide will take you through the **disassembly** of the **Original Prusa CW1** including the **check of the wiring**.

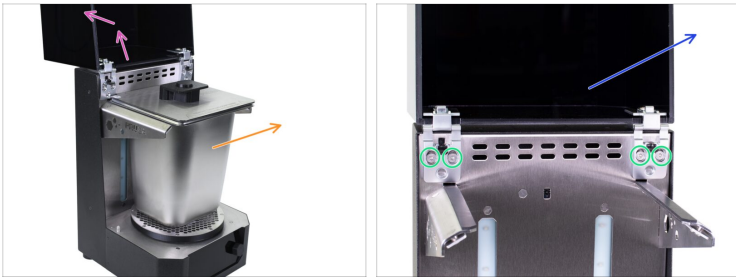
 **WARNING:** This device utilizes UV light, which can harm your eyesight or skin. Do not turn the device ON until it is fully reassembled with all the covers installed!!!

STEP 2 Tools necessary for this guide



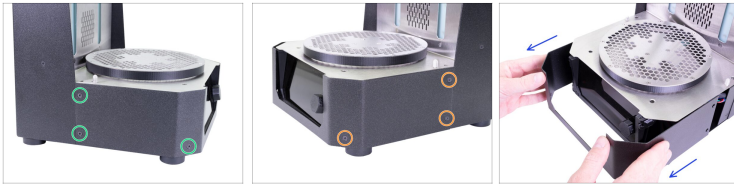
- **For the following steps, please prepare:**
- 2.0mm Allen key
- 2.5mm Allen key


STEP 3 Removing the lid







- ◆ Open the lid, all the way to the back.
- ◆ Remove gastro pan from the CW1.
- ◆ Release four screws on both hinges.
- ◆ Carefully remove the lid with hinges.
- ⚠ **Manipulate with the lid carefully, it can be easily scratched.**

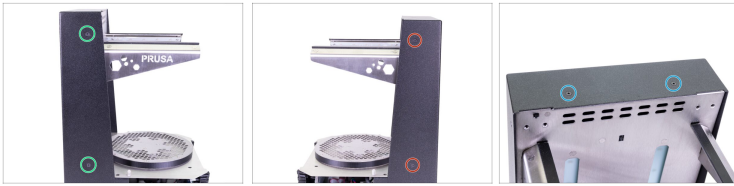
STEP 4 Removing the top cover









 **Proceed carefully with these screws**, preferably use an Allen key with straight sharp edges, there is a risk of stripping the screw's head.

-  Turn the left side of the CW1 towards you.
-  Locate, release, and remove three screws.
-  Turn the CW1 to the other side (180 °) and again remove three screws.
-  Remove the front cover from the CW1.

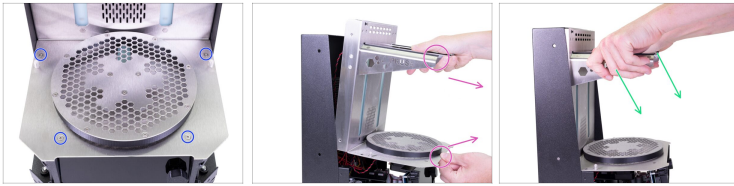
STEP 5 Removing the rear cover



 **Proceed carefully with these screws, preferably use an Allen key with straight sharp edges, there is a risk of stripping the screw's head.**

-  Turn the left side of the CW1 towards you.
-  Release and remove two screws on the side.
-  Turn the right side of the CW1 towards you.
-  Release and remove two screws on the side.
-  Release and remove two screws on the top of the rear cover.

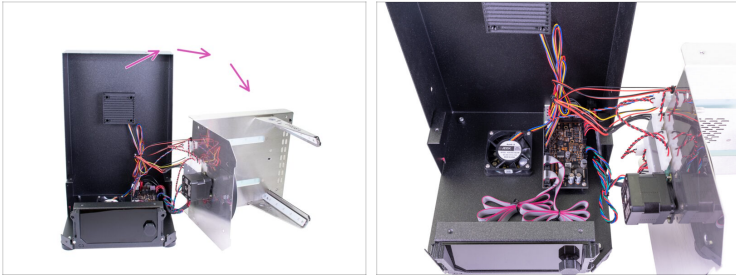
STEP 6 Removing the top cover



Be extra careful!!! The steel parts on the machine have sharp edges. **Avoid cutting yourself!**

- ◆ Release and remove four screws on the top cover.
- ◆ Carefully grab both gastro pan holders and slightly push them down and out. The stainless steel sheet bends slightly - that's alright.
- ◆ As soon as the steel sheet with the holders pops out, grab one holder with your hand and use the other hand to grab the sheet near the rotating the platform. Then carefully remove this assembly out. **Be careful, there are cables attached to it!!!**

STEP 7 Removing the top cover

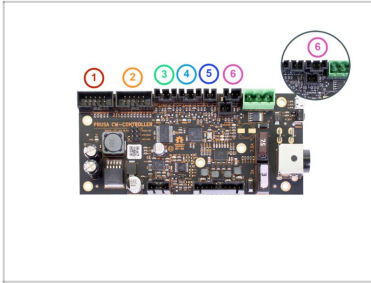


Be extra careful!!! The steel parts on the machine have sharp edges. **Avoid cutting yourself!**



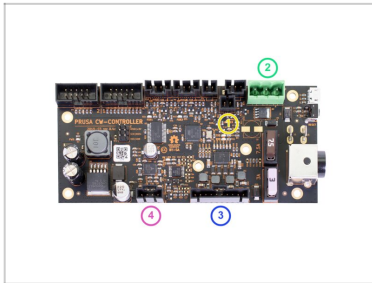
Carefully remove the top part from the machine and put it next to the CW1. **Do not pull the cables!!!**

STEP 8 CW-Controller connectors



- ◆ Check the cables are connected properly:
 - ◆ 1. LCD cable (with two stripes)
 - ◆ 2. LCD cable (with one stripe)
 - ◆ 3. Bottom fan
 - ◆ 4. Filtration fan
 - ◆ 5. Lid safety switch
 - ◆ 6. Prusa IR-sensor (*some older units may have a four-pin connector, see the detail*)
- ⓘ The list continues in the next step ...

STEP 9 CW-Controller connectors



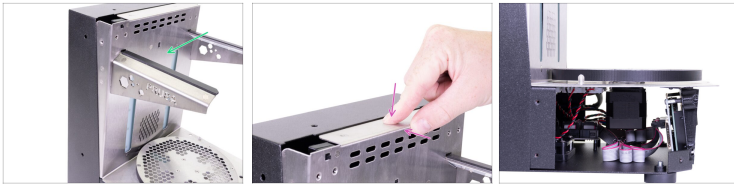
- 1. Thermistor
- 2. Heater
- 3. LED power cable
- 4. CW1 motor





STEP 10 Checking LCD cables connection



- Make sure the cable are fully inserted into the connectors on the LCD board.
 - **Wrong connection.** There is a space between the connector and pins on the LCD board. The cable is not fully inserted into the connector.
 - **Correct connection.** The cable is inserted all the way into the connector.
- Check the cable connections in the LCD board:
 - Left - LCD cable with one stripe
 - Right - LCD cable with two stripes



STEP 11 Mounting the top cover



-  **Be extra careful!!!** The steel parts on the machine have sharp edges. **Avoid cutting yourself!**
-  Put the cover back in the CW1.
-  Squeeze the edges of the cover slightly to get under the rear cover.
-  **Make sure no cables are pinched under the cover** and make sure the cables do not interfere with the lower fan.

STEP 12 Mounting the rear cover



-  Align both screw holes on the top of the rear cover with the holes in the stainless steel cover.
-  Insert two M3x5b countersunk screws into the holes and tighten it.

STEP 13 Mounting the rear cover



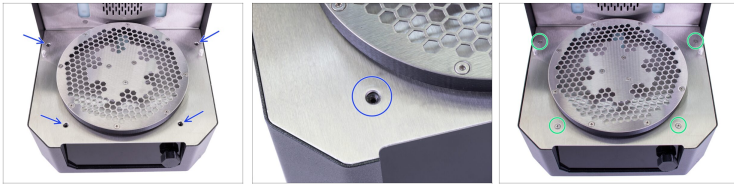
- Turn the left side of the CW1 towards you.
- Secure the rear cover with two M3x5b countersunk screws.
- Turn the right side of the CW1 towards you.
- Secure the rear cover with two M3x5b countersunk screws.

STEP 14 Mounting the front cover



- Carefully place the front cover on the CW1.
- Turn the left side of the CW1 towards you.
- Secure the cover with three M3x5b countersunk screws.
- Turn the right side of the CW1 towards you.
- Secure the cover with three M3x5b countersunk screws.

STEP 15 Securing the top cover



- ◆ Align all four holes in both parts.
- ◆ Secure the top cover with four M4x8b countersunk screws.

STEP 16 Mounting the lid



- ◆ Mount the lid with hinges back to the CW1 and slightly tighten the screws.
- ◆ Adjust the screws in the oval holes to the same position on both hinges. Tighten the screws.
- ◆ Close the lid and check on the sides that it fits correctly on the rear cover along its entire length. If necessary, adjust the position of the hinges.

STEP 17 It's done!



- ◆ **Good job. It's done!**
- ◆ Now try to wash and cure some print ;)
