

Table of Contents

- How to replace a filter (SL1/SL1S) 3**
 - Step 1 - Introduction 4
 - Step 2 - Tools necessary for this guide 5
 - Step 3 - Removing the filtration 5
 - Step 4 - Removing the filtration 6
 - Step 5 - Disassembling the filtration 6
 - Step 6 - New filter - parts preparation 7
 - Step 7 - Reassembling the filtration 7
 - Step 8 - Mounting the filtration assembly
..... 8
 - Step 9 - It's done! 8

How to replace a filter (SL1/SL1S)



help.prusa3d.com/g148208

Scan the QR code to
display the latest
version of this
chapter.



STEP 1 Introduction



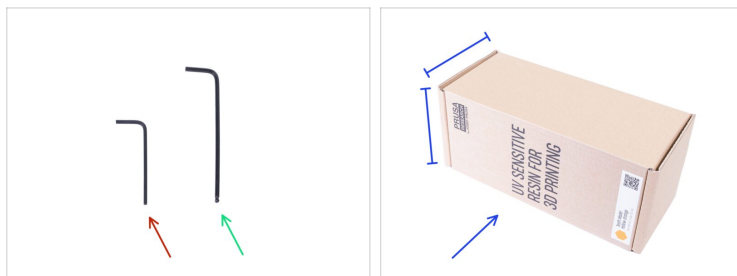
◆ This guide will take you through the replacement of the **filter** on the **Original Prusa SL1** and **SL1S SPEED**.

ⓘ Some parts might slightly differ. However, it does not affect the procedure.

◆ All necessary parts are available in our eshop shop.prusa3d.com

ⓘ Note that you have to be logged in to have access to the spare parts section.

STEP 2 Tools necessary for this guide



- 2.0mm Allen key
- 2.5mm Allen key
- Resin bottle box or any box with at least two dimensions of 10 - 15 cm / 4 - 6 inches.

STEP 3 Removing the filtration



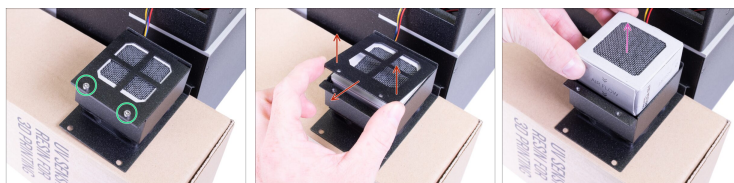
- Turn the rear side of the printer towards you. The power switch button and Ethernet connector must be facing you.
- Place the cardboard box next to the printer. Make sure that the top surface of the box is as close as possible to the filtration cover.
- ⚠ Proceed carefully with these screws, preferably use an Allen key with straight sharp edges, there is a risk of stripping the screw's head.**
- Release two countersunk screws.

STEP 4 Removing the filtration



- ◆ Slide the filtration cover (assembly) all the way up. You must see a small gap between the filtration assembly and the rear cover of the printer.
- ◆ Gently pull the filtration assembly out.
- ◆ Remove the filtration assembly from the printer and put it on the cardboard box. **Do not pull the cables!**

STEP 5 Disassembling the filtration



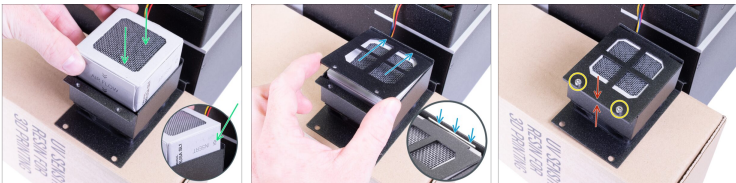
- ◆ Release two screws on the filter housing lid.
- ◆ Open the lid and remove it from the filtration assembly.
- ◆ Pull out the filter from the filtration housing.

STEP 6 New filter - parts preparation



- ◆ **For the following steps, please prepare:**
 - ◆ New filter (1x)
 - ◆ Remove the plastic film, but don't tear the paper cover.

STEP 7 Reassembling the filtration



- ◆ Insert the filter into the filter housing, see the marks on the side of the filter.
- ◆ See the opening for the filter housing lid and slide the lid in.
- ◆ Secure it using two M3x5 screws.
- ◆ Make sure the lid and the housing are in contact.

STEP 8 Mounting the filtration assembly



- Push the cables from the filtration assembly back into the printer.
- Insert the filtration assembly into the printer. Start by inserting the bottom part. **Make sure no cable is pinched!**
- Close the cover and secure it with two M3x5 countersunk screws.

STEP 9 It's done!



- **Good job!** You have successfully replaced the filter.
