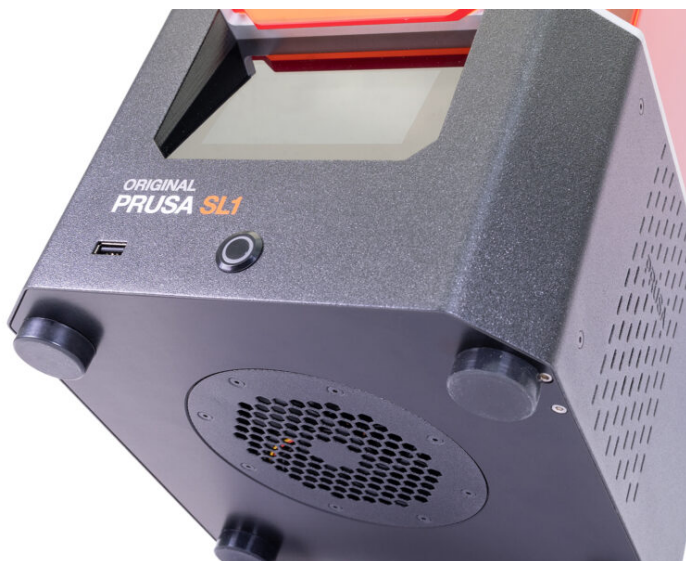


Table of Contents

How to replace a UV LED assembly (SL1)	3
Step 1 - Introduction	4
Step 2 - Tools necessary for this chapter	5
Step 3 - Preparing the printer	5
Step 4 - Removing of the UV LED assembly	6
Step 5 - Disconnecting the UV LED assembly	6
Step 6 - New UV LED assembly - parts preparation	7
Step 7 - Removing the UV LED cover	7
Step 8 - Connecting the UV LED assembly	8
Step 9 - Calibration the new UV LED assembly - preparation	9
Step 10 - Calibrating the new UV LED assembly - Booting up the printer	10
Step 11 - Initiating the calibration process	10
Step 12 - Testing the display	11
Step 13 - UV calibrator placement and connection	11
Step 14 - Calibration process	12
Step 15 - Applying the calibration results	13
Step 16 - Finished!	13

How to replace a UV LED assembly (SL1)

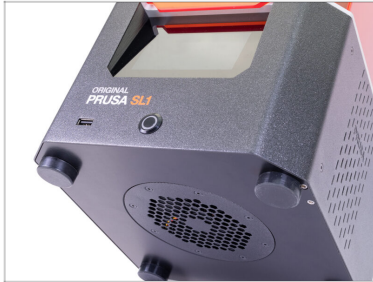


help.prusa3d.com/g149828

Scan the QR code to
display the latest
version of this
chapter.



STEP 1 Introduction



i This guide will take you through the replacement of the **UV LED assembly** on the **Original Prusa SL1**.

◆ All necessary parts are available in our shop
shop.prusa3d.com

i Note that you have to be logged in to have access to the spare parts section.

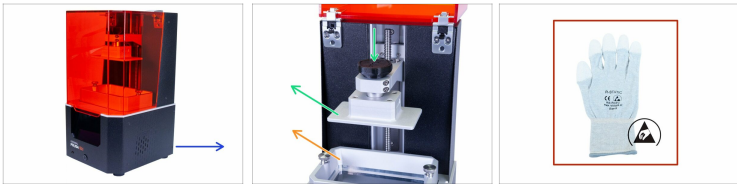
⚠ **WARNING:** This device utilizes UV light, which can harm your eyesight or skin. Do not turn the device ON until it is fully reassembled with all the covers installed!!!

STEP 2 Tools necessary for this chapter




- ◆ 2.0mm Allen key
- ◆ Cardboard or similar soft pad (e.g. a piece of cloth)

STEP 3 Preparing the printer



 **Before you start, make sure that:**

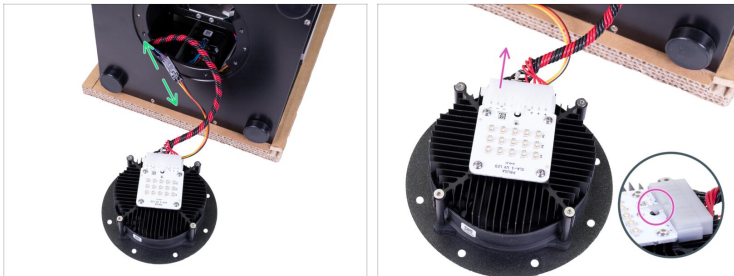
- ◆ the printer is plugged off
 - ◆ the resin tank is removed
 - ◆ the print platform is removed
 - ◆ you use ESD gloves (recommended)
-  ESD gloves are anti-static (prevent damage to the electronics).

STEP 4 Removing of the UV LED assembly



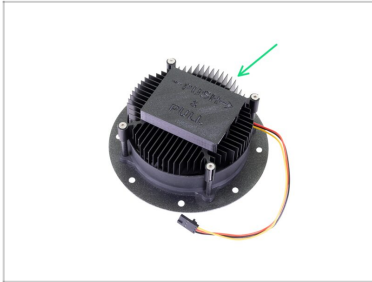
- Use any soft pad (e.g. a towel) and place the back of the printer on it. Make sure there is a gap between the PSU power button and the surface beneath it. Avoid laying the printer directly on the button. Kit owners can use the cardboard.
- Release all screws on the UV LED assembly.
- Carefully put the UV LED assembly out of the printer.

STEP 5 Disconnecting the UV LED assembly



- Disconnect the UV LED fan cable from the extension cable.
- Disconnect the UV LED cable from the assembly. You need to push the safety latch on the connector first.

STEP 6 New UV LED assembly - parts preparation



- For the following steps, please prepare:
- New UV LED assembly (1x)

STEP 7 Removing the UV LED cover



⚠ **WARNING:** After you remove the cover from the UV LED, please avoid touching the diodes. Any dirt or grease on the surface might result in print artefacts.

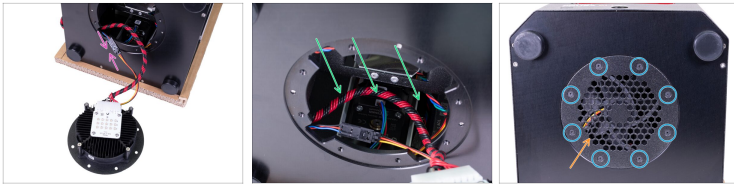
● UV LED is protected with a plastic cover. To remove it, push it down, then pull slightly in the indicated direction and remove it.

⚠ While connecting the UV LED cable proceed carefully. The **cooling fins are sharp**, you can hurt yourself.

● Connect the UV LED cable. Make sure the safety pin on the connector "clicks" in the UV LED.

● Check all the wires are all the way in the connector.

STEP 8 Connecting the UV LED assembly



- ◆ Connect the UV LED fan cable to the extension cable.
- ◆ Put the cables back inside the printer, make sure it is all the way back, and won't interfere with the UV LED, which will be mounted to the circular opening shortly.
- ◆ Insert the UV LED assembly back into the printer. **Be careful not to pinch the cables!**
- ◆ Mount the UV LED assembly with eight M3x5b countersunk screws.
- ◆ Carefully turn the printer back on its feet.

STEP 9 Calibration the new UV LED assembly - preparation



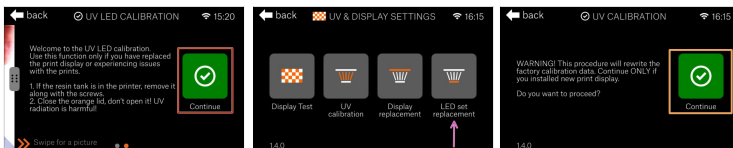
- ◆ **For the following steps, please prepare:**
- ◆ UV calibrator (1x)
- ◆ MicroUSB cable (1x)
- ⓘ Starting firmware 1.4.0, the system allows for user calibration of the UV light intensity, using an external UV calibrator. This action is required each time the UV LED assembly is replaced for a new one.

STEP 10 Calibrating the new UV LED assembly - Booting up the printer



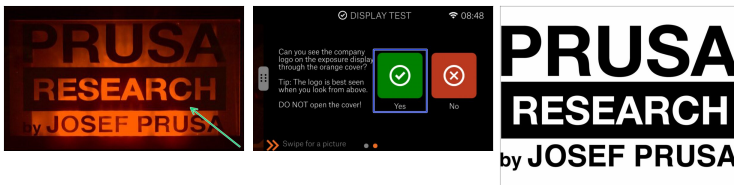
- Plug the printer in and turn it ON.
- Wait for the printer boot and display the Home screen, and verify you have **firmware version 1.4.0 or higher**. If you are on an older version of the firmware, please update it now.

STEP 11 Initiating the calibration process



- There is a guide, which will take you through the entire process, read the instructions carefully, then click **Continue**.
- Navigate the menu to "Settings -> Advanced settings", swipe down to "UV & Display settings" and select **LED set replacement**.
- You will receive a warning that the factory calibration data will be cleared. Select **Continue**.

STEP 12 Testing the display



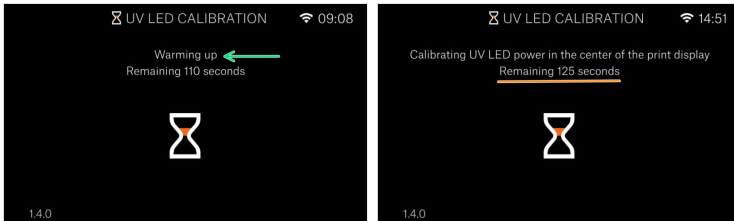
- ⚠ Don't open the lid under any circumstances, keep it closed! The UV light inside will cause damage to your eyes.
- 🟢 Looking from above, check the entire screen. You must be able to see our company logo in full. No parts (letters) should be missing.
- 🟡 Confirm the display is working by selecting Yes.

STEP 13 UV calibrator placement and connection



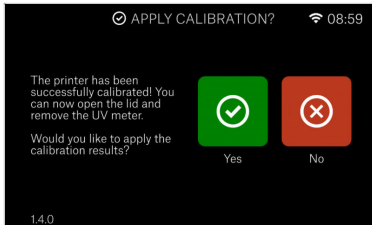
- 🟢 Open the lid and place the UV calibrator on the display, with the photosensors towards the display. Make sure the guide pegs on the UV calibrator fit into the holes for the tank screws and that the calibrator lays flat against the display. Then plug in the USB cable.
- 🟡 Close the lid carefully, with the cable from the UV meter coming out from above the touchscreen.
- 🟠 Once you select **Continue**, the calibration procedure will start.

STEP 14 Calibration process



- The calibration process is completely automatic. It will inform you of its progress and current task. The whole procedure only takes a few minutes.
- The process starts by warming up the LED panel to a stable temperature, before calibrating the different areas of the display.
- You will be provided with an estimate on how much time is remaining of each part. Feel free to leave the printer and get some gummy bears. We are almost done:)

STEP 15 Applying the calibration results



Once the calibration procedure is complete you will be asked if you want to apply the results.

i If you select "No", no change will be made and you will be taken back to the UV & Display Settings page

STEP 16 Finished!



Congrats, your **UV LED assembly** is successfully replaced and you are ready to print!

i Thanks to the calibration the printer is compatible with the resin presets in PrusaSlicer.
