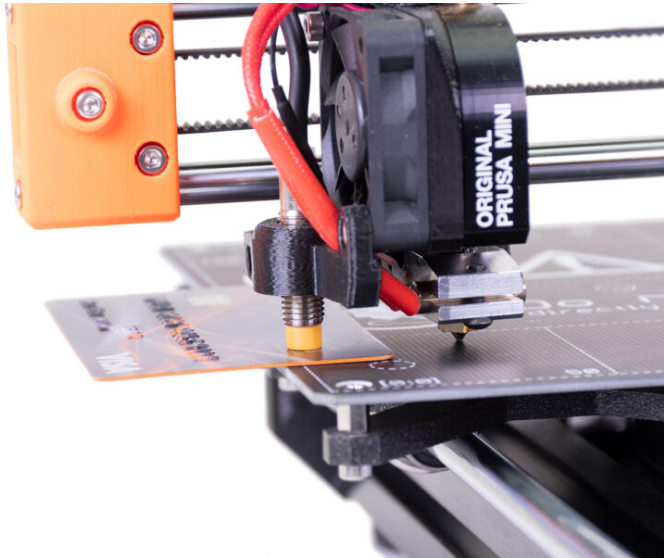


Table of Contents

Height adjustment of M.I.N.D.A./SuperPINDA sensor (MINI/+)	3
Step 1 - Introduction	5
Step 2 - Preparing the printer	6
Step 3 - M.I.N.D.A./SuperPINDA height adjustment	7
Step 4 - First layer calibration	8

Height adjustment of M.I.N.D.A./SuperPINDA sensor (MINI/+)

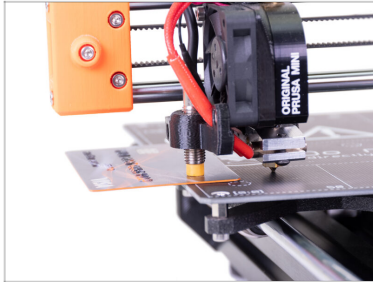


help.prusa3d.com/g154547

**Scan the QR code to
display the latest
version of this
chapter.**



STEP 1 Introduction



i This guide will take you through the **M.I.N.D.A. and SuperPINDA sensor adjustment** on the **Original Prusa MINI and MINI+**.




📌 The M.I.N.D.A. sensor has a yellow tip, while the SuperPINDA has a black tip. **The approach for adjusting it is the same for both versions.**

(MINI/+)

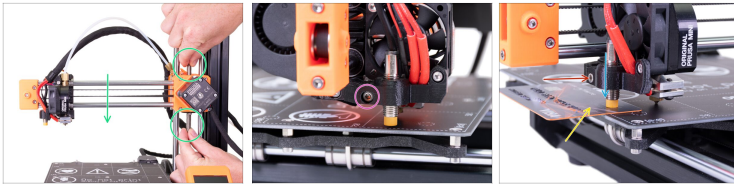
STEP 2 Preparing the printer



 **Before you start, make sure that:**

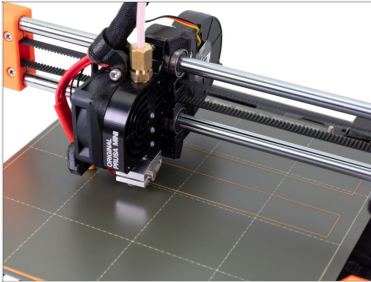
-  The printer is turned off and unplugged from the socket.
-  Steel sheet is removed from the printer
-  There is no filament residue on the tip of the nozzle.

STEP 3 M.I.N.D.A./SuperPINDA height adjustment



- ◆ Using your fingers turn the lead screw and move the entire X-axis down. **Stop when the tip of the nozzle touches the heatbed! Avoid bending the heatbed!**
- ◆ Release slightly the screw on the minda-holder so you are able to adjust position of the M.I.N.D.A./SuperPINDA sensor.
- ◆ Place a credit card under the M.I.N.D.A./SuperPINDA sensor or use the tip of a zip tie.
- ⓘ **It is recommended to use an old/unused credit card!** The magnets in the heatbed could make it unusable.
- ◆ Gently press the M.I.N.D.A./SuperPINDA sensor down against the credit card.
- ◆ Tighten the screw on the minda-holder. **Do not use an excessive force, you can break the printed part!**
- ◆ Rotate the lead screw manually in the opposite direction to move the axis at least 5 mm up.

STEP 4 First layer calibration



- ◆ Almost there. This procedure has changed the Live-Z adjust which must now be set again.
- ⓘ Go to our article on the First Layer Calibration and follow the instructions there.
