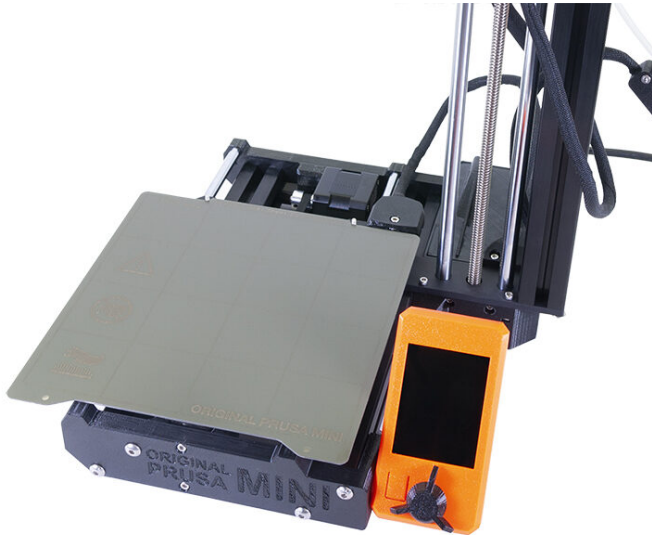


Table of Contents

How to replace a heatbed (MINI/MINI+)	3
Step 1 - Introduction	4
Step 2 - Tools necessary for this guide	5
Step 3 - Opening the box with the electronics	5
Step 4 - Disconnecting the heatbed	6
Step 5 - Removing the heatbed	6
Step 6 - New heatbed - parts preparation	7
Step 7 - Mounting the heatbed	7
Step 8 - Connecting the heatbed cable	8
Step 9 - Covering the electronics	9
Step 10 - Final check	10
Step 11 - It's done!	10

How to replace a heatbed (MINI/MINI+)

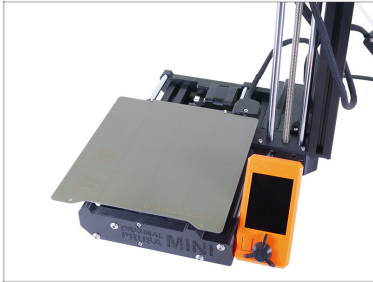


help.prusa3d.com/g156765

Scan the QR code to
display the latest
version of this
chapter.

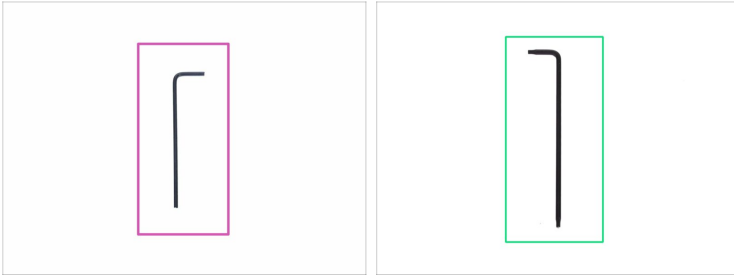


STEP 1 Introduction



- ◆ This guide will take you through the replacement of the **heatbed** on the **Original Prusa MINI** and **MINI+**.
- ⓘ Some parts might slightly differ. However, it does not affect the procedure.
- ◆ All necessary parts are available in our eshop shop.prusa3d.com
- ⓘ Note that you have to be logged in to have access to the spare parts section.

STEP 2 Tools necessary for this guide



◆ For the following steps, please prepare:

- ◆ 2.5mm Allen key
- ◆ TX10 Torx key

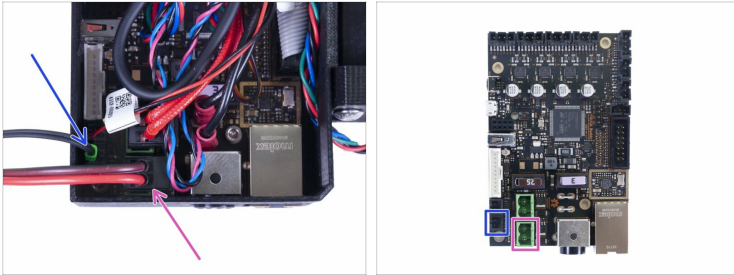
STEP 3 Opening the box with the electronics



⚠ **Turn the printer off and unplug it from the socket!**

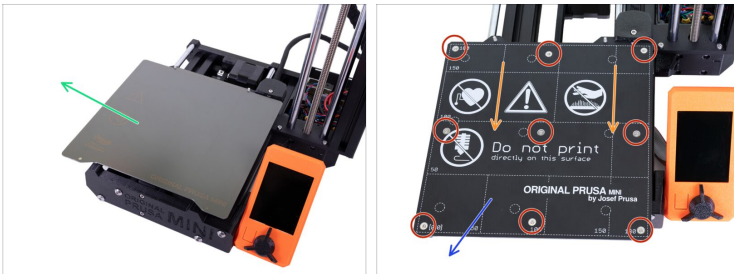
- ◆ Release and remove the M3 screw on the box with the electronics.
- ◆ Remove the printed cable cover.
- ◆ Lift the second electronics cover slightly. Before you remove it completely, pull it first towards the vertical aluminium extrusion to release both pins from the holes.

STEP 4 Disconnecting the heatbed



- ◆ Disconnect the heatbed cable.
- ◆ Disconnect the heatbed thermistor.

STEP 5 Removing the heatbed



- ◆ Remove the steel sheet.
- ◆ Move the Y-carriage all the way to you.
- ◆ Release and remove 9 screws on the heatbed by using a Torx TX10 key.
- ⓘ Keep all the screws for the next steps.
- ◆ Remove the heatbed from the printer.

STEP 6 New heatbed - parts preparation



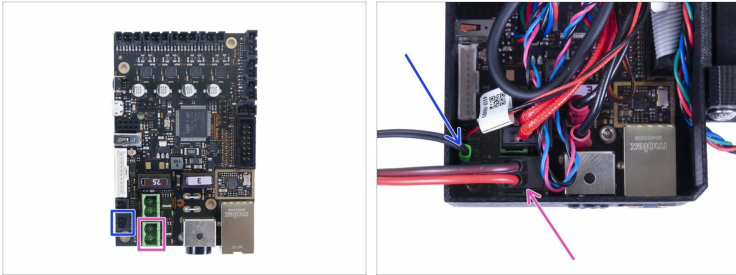
- ◆ For the following steps, please prepare:
- ◆ New heatbed (1x)

STEP 7 Mounting the heatbed



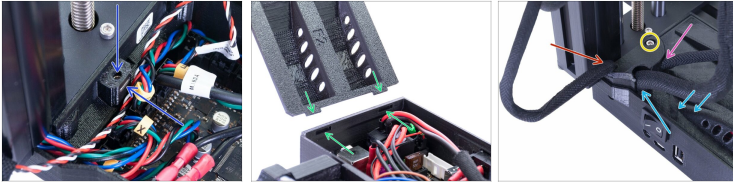
- ◆ Move the Y-carriage all the way to you.
- ◆ Place the heatbed on the Y-carriage.
- ◆ Align all 9 holes on the heatbed with the heatbed spacers.
- ◆ Insert nine M3x4b screws to the holes. **DON'T fully tighten the screws.**
- ◆ After all screws are in place, tighten them in the following order:
 - ◆ Center screw
 - ◆ First four screws (edges)
 - ◆ Last four screws (corners)

STEP 8 Connecting the heatbed cable



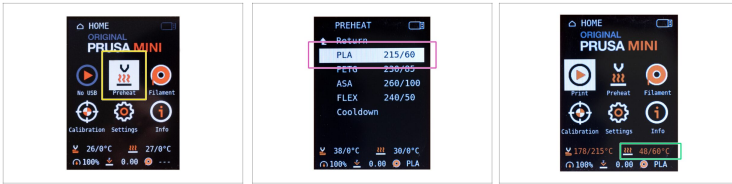
- ◆ Connect the heatbed thermistor cable in the lower connector on the Buddy board.
- ◆ Connect the heatbed cable in the lower green connector on the Buddy board.

STEP 9 Covering the electronics



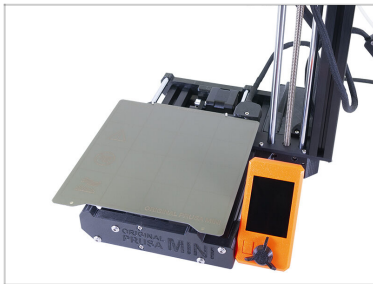
- ◆ Before covering the electronics, make sure the square nut is correctly positioned in the printed part. The nut must not fall out! This can cause fatal damage to the electronics.
- ◆ Insert the cover back in, make sure it is properly seated in the slot. *Note: on an older design, there were holes instead of slots, the assembly procedure is the same.*
- ◆ **Place the second cover on the top and arrange the cables:**
 - ◆ **Extruder bundle**, ensure the textile sleeve is partially in. Also, it must be tilted away from the printer.
 - ◆ **Heatbed bundle**, ensure the textile sleeve is partially inside the box.
 - ◆ **Filament sensor cable** (optional), ensure that the textile sleeve wrapped around the cables is partially inside the box.
- ◆ Now, tighten the second cover. Check that no cable is pinched.

STEP 10 Final check



- Connect the printer and turn it ON.
- Use the knob and navigate to the **Preheat** in the Menu.
- Select **PLA**.
- Navigate back to the **Info** screen and check if the temperature rises.

STEP 11 It's done!



- **Good job!** You just replaced the heatbed on your Original Prusa MINI printer.
