

Table of Contents

How to replace a heatbed tile and a heatbed tile cable (XL)	3
Step 1 - Introduction	4
Step 2 - Tools necessary for this guide	5
Step 3 - Preparing the printer	6
Step 4 - Disconnecting the heatbed tile cable	7
Step 5 - Removing the heatbed tile	8
Step 6 - Replacing the heatbed tile - parts preparation	9
Step 7 - Connecting the cable to the Modular Bed Board	9
Step 8 - Installing the heatbed tile and connecting it	10
Step 9 - Exchanging tiles 5 or 12	11
Step 10 - Exchanging tiles 4 or 13	12
Step 11 - Re-installing the Modular bed board	13
Step 12 - Testing the printer	14
Step 13 - It's done	14

How to replace a heatbed tile and a heatbed tile cable (XL)



help.prusa3d.com/g511563

Scan the QR code to
display the latest
version of this
chapter.

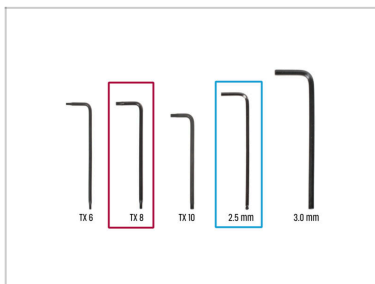


STEP 1 Introduction



- ◆ This guide will take you through the replacement of a **heatbed tile and its cable** on the **Original Prusa XL**.
Instructions are compatible with all Original Prusa XL versions.
- ◆ All necessary parts are available in our shop prusa3d.com -Note that you have to be logged in to have access to the spare parts section.
- ⓘ Starting from April 2025, you may receive a new heatbed. The difference is the black rubber band on the bottom side of the heatbed.
The assembly of both versions is the same.
 - ◆ New heatbed version: With the rubber band.
 - ◆ Old heatbed version: Without the rubber band.

STEP 2 Tools necessary for this guide



● **For this guide,
please prepare:**

● TX8 Torx key

● 2.5mm Allen key

STEP 3 Preparing the printer



- ⬢ Auto-home the printer, navigating to *Control* ->*Autohome*.
- ⬢ Lower the heatbed slightly from the auto-home position. Navigate to *Control* ->*Move Axis* ->*Move Z* and turn the knob to move the axis.
- ⚠ **If the printer is heated, cool down the printer.**
Navigate to *Control* ->*Temperature* ->*Cooldown*.
Wait for the printer to fully cool down.
- ⬢ Turn the power switch OFF (symbol "O").
- ⬢ From the rear side of the printer, unplug the PSU cable.
- ⬢ Remove the steel sheet.

STEP 4 Disconnecting the heatbed tile cable



- i** The Modular Bed board is located below the heatbed, and it is covered by bed-controller-case. Each heatbed tile is connected to the Modular Bed by a cable.

 - The bed-controller-case has engraved numbers under the corresponding heatbed tile cable, with 8 cables per each side.
- 📌** Locate the heatbed tile cable based on the number of the heatbed tile.
- ⚠** **Each connector has a safety latch. It is necessary to press the latch before disconnecting. Otherwise, the connector may get damaged.**
- In case of a heatbed tile cable replacement, disconnect the cable from the Modular Bed board.
- The heatbed tiles are numbered as shown in the picture.
- From the Modular Bed board side, disconnect the cable associated with the heatbed tile that will be replaced.

STEP 5 Removing the heatbed tile



Each heatbed tile is held in place from the bottom by four screws. Identify the ones holding the heatbed tile that will be replaced.



Using the TX 8 Allen key, loosen the four M3x10rT screws that hold the heatbed tile in place, together with their M3 washers.



Do not throw away the screws and the washers!
We will use them later.



Remove the heatbed tile and place it away. *In the example picture, the heatbed tile 7 is removed.*



If you need to remove tiles 4, 5, 12, or 13, instructions will be provided in further steps. **However, do not skip the next steps and read the whole guide!**

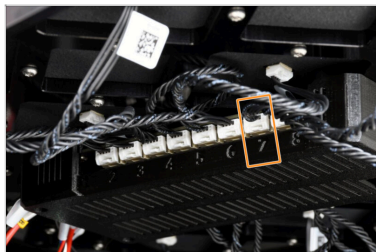
STEP 6 Replacing the heatbed tile - parts preparation



● For the following step, please prepare:

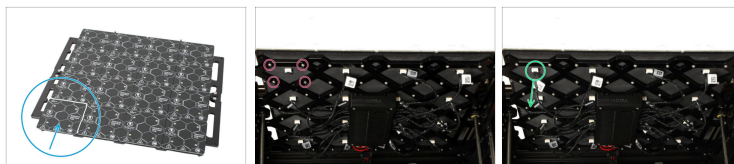
- Heatbed tile (1x)
- Heatbed tile cable (1x)
- M3x10rT screws (4x)
- M3 washers (4x)

STEP 7 Connecting the cable to the Modular Bed Board



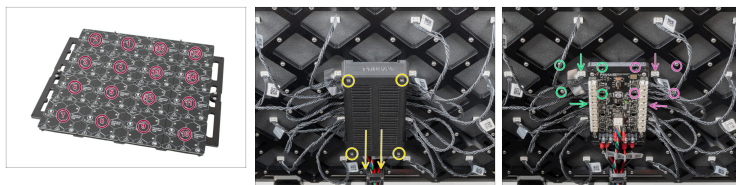
- On one side of the cable is attached a QR code label.
- Using the Molex connector farther from the QR code label, connect the cable to the Modular Bed board.

STEP 8 Installing the heatbed tile and connecting it



- Place the heatbed tile on its spot.
- Using the TX8 key, tighten the screws together with their washers.
- Connect the heatbed tile cable to the heatbed tile.

STEP 9 Exchanging tiles 5 or 12



⚠ The following steps only apply if you are exchanging tiles 4, 5, 12, or 13.
If you are not exchanging any of these, skip to this step: [Testing the printer](#)

🟡 Unscrew the four M3x20rT screws and remove the Modular BED cover.

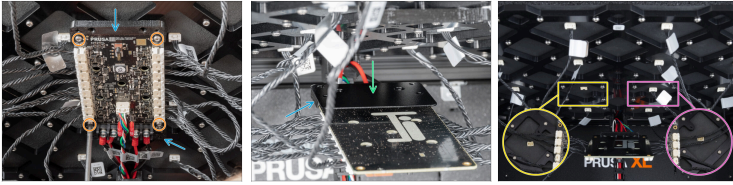
ⓘ See this step when [Exchanging tiles 4 or 13](#)

⬛ **Exchange tiles 5 and 12 without removing the Modular Bed.**

🟢 The four M3x10rT screws holding tile 5 are easily accessible through holes in the Modular Bed.

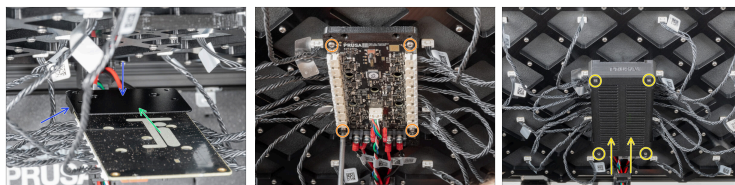
🟣 The four M3x10rT screws holding tile 12 are easily accessible through holes in the Modular Bed.

STEP 10 Exchanging tiles 4 or 13



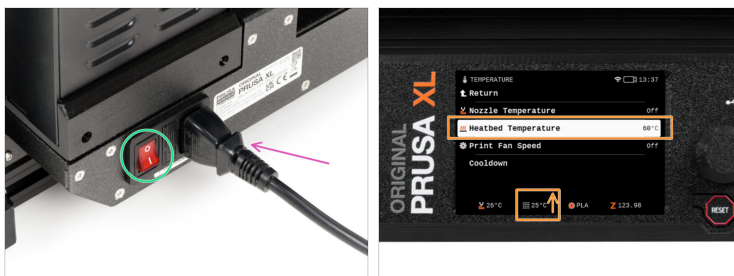
- To exchange tiles 4 or 13, the Modular Bed has to be removed to access one of the screws holding each heatbed tile.
- Unscrew the four M3x10rT screws holding the modular bed. Hold the Modular Bed in place as you remove the last screw.
- Hold both the plastic mount-rear and the mount-front at each end. **Slowly lower the Modular Bed so the plastic mounts do not fall down.**
- Secure the Modular Bed PCB Shield and remove it along with the plastic mounts.
 - The four M3x10rT screws holding tile 4 are now accessible.
 - The four M3x10rT screws holding tile 13 are now accessible.

STEP 11 Re-installing the Modular bed board



- ◆ The Modular Bed PCB Shield should be on the top of the plastic mount-rear part
- ◆ The plastic mount-rear and the Modular Bed PCB Shield are not attached to each other. You have to hold the parts as you align the board with the heatbed.
- ◆ Align the plastic mount-front and gently push the Modular Bed board to the heatbed.
- ◆ Attach the board back on the heatbed. Secure the board with four M3x10t screws.
- ◆ Attach the electronic cover back and secure it with four M3x16 screws.

STEP 12 Testing the printer



- ◆ From the rear side, plug in the power cable.
- ◆ Turn the power switch ON (symbol "I").
- ◆ Set a temperature to the entire modular bed, navigating to *Control* -> *Heatbed temperature*, and see if the temperature raises regularly.

STEP 13 It's done



- ◆ That's it, good job! You just successfully replaced the heatbed tile on the Original Prusa XL.
