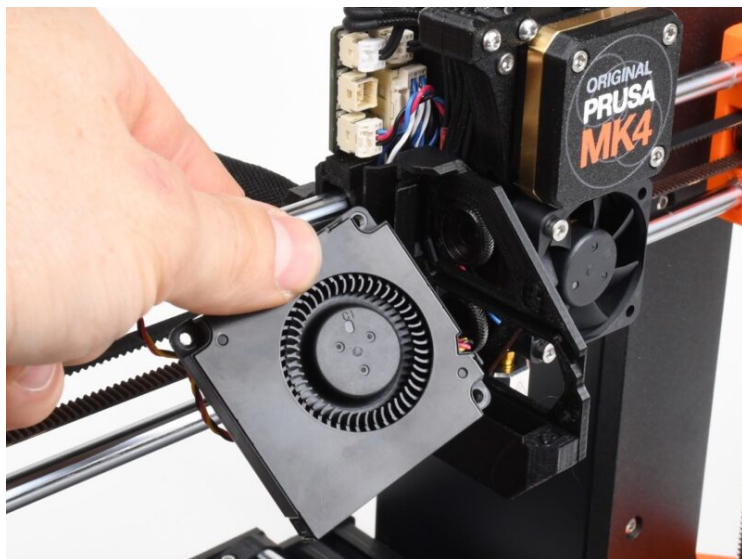


Table of Contents

How to replace a print fan (MK4 / MK3.9)	3
Step 1 - Introduction	4
Step 2 - Tools necessary for this chapter	4
Step 3 - Preparation	5
Step 4 - Loveboard cover removal	5
Step 5 - Fan removal	6
Step 6 - Parts preparation: Print fan	6
Step 7 - Print fan cable management	7
Step 8 - Print fan installation	8
Step 9 - Finishing the fan installation	8
Step 10 - Done	9

How to replace a print fan (MK4 / MK3.9)



help.prusa3d.com/g641192

Scan the QR code to
display the latest
version of this
chapter.

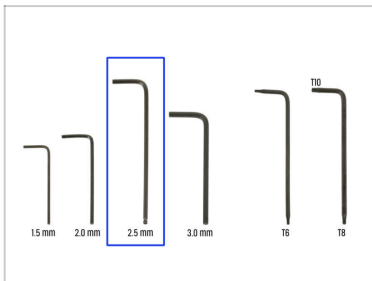


STEP 1 Introduction



- ◆ This guide will take you through the **Print fan** replacement on your Original Prusa MK4 or MK3.9.
- ◆ All necessary parts are available in our eshop prusa3d.com.
- ⓘ Note that you have to be logged in to have access to the spare parts section.

STEP 2 Tools necessary for this chapter



- ◆ **For this chapter, please prepare:**
- ◆ 2.5mm Allen key

STEP 3 Preparation



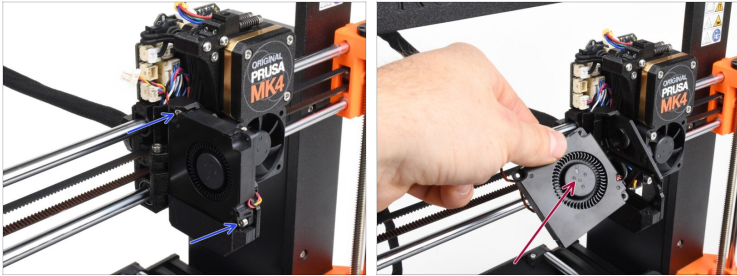
- ◆ Before you start, make sure the extruder on your printer is in the middle of both the X and Z axes.
- ◆ Power off your printer and disconnect it from the power.

STEP 4 Loveboard cover removal



- ◆ Remove the loveboard cover on the extruder by lifting it up.
- ◆ Disconnect the print fan from the Loveboard.
 - ⚠ Note there is a small safety latch on the connector, which must be pushed in, while you pull the connector out, in order to disconnect it.

STEP 5 Fan removal



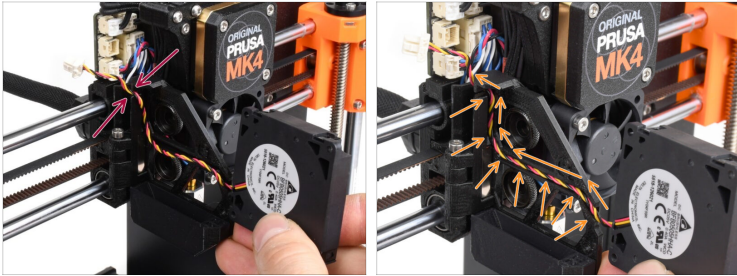
- ◆ Using the 2.5mm Allen key, remove the two M3x6 screws holding the print fan.
- ◆ Remove the print fan.

STEP 6 Parts preparation: Print fan



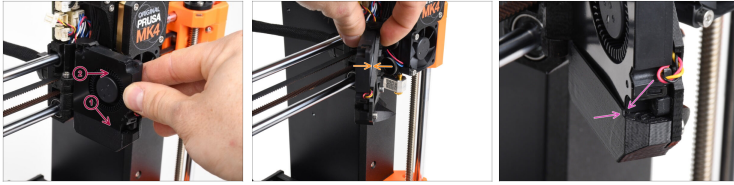
- ◆ **For the following steps, please prepare:**
- ◆ Print fan (1x)
- ⓘ Can be obtained on Prusa E-shop

STEP 7 Print fan cable management



- Take the replacement print fan and guide its cable through the opening in the print fan holder.
- Tuck the cable into the dedicated channel in the print fan holder. The cable must not protrude out of the channel, otherwise, it won't be able to insert the fan later on.

STEP 8 Print fan installation



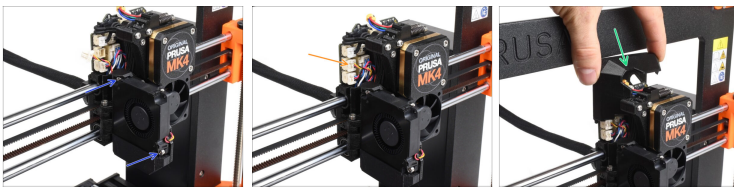
- ◆ Cover the cable with the print fan, as seen in the picture. First, insert the bottom of the fan into the fan shroud (printed part below the fan). Then, press the fan towards the print fan holder behind it.



Do not pinch the cable!

- ◆ Make sure there is no gap between the print fan and the print fan holder behind it - meaning, the cable fits properly into the dedicated channel.
- ◆ Make sure the fan has been inserted properly into the fan shroud.

STEP 9 Finishing the fan installation



- ◆ Fix the fan in place using two M3x6 screws.
- ◆ Connect the fan cable into the corresponding connector on the Loveboard.
- ◆ Cover the extruder with the Loveboard cover on top. Make sure none of the cables gets pinched.

STEP 10 Done



- The fan replacement is finished. Verify your extruder is assembled as seen in the picture.
- To test out the fan functionality, visit the menu **Control > Calibrations & Tests > Fan test**.
