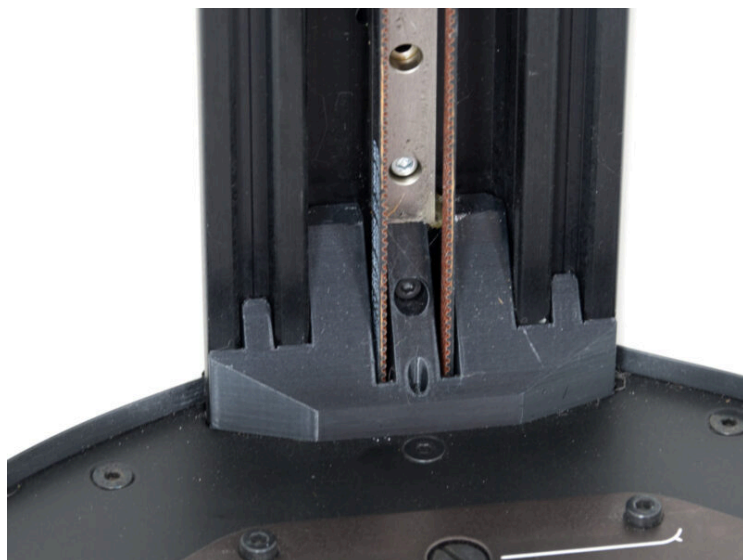


Tabla de Contenido

How to tension the belts (HT90)	3
Paso 1 - Introduction	4
Paso 2 - Herramientas necesarias para este capitulo	5
Paso 3 - Printer preparing	6
Paso 4 - Positioning the belt tension meter	7
Paso 5 - Tensioning the belt	8
Paso 6 - All done!	9

How to tension the belts (HT90)

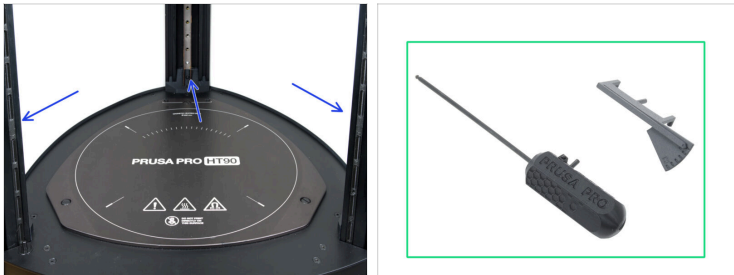


help.prusa3d.com/g901161

Escanea el código
QR para ver la última
versión de este
capítulo.



PASO 1 Introduction



- ◆ This guide will take you through the process of **tensioning all belts** on the **Prusa Pro HT90**.
- ◆ This procedure requires specific tools provided in the **Prusa Pro HT90 Maintenance Kit**, available in our e-shop on prusa3d.com.
- ⓘ Ten en cuenta que debes iniciar sesión para tener acceso a la sección de repuestos.

PASO 2 Herramientas necesarias para este capítulo

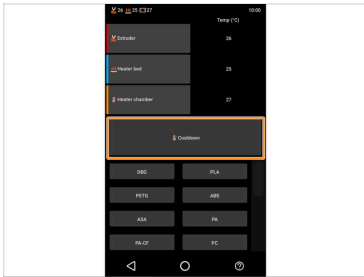


● **Para los siguientes pasos, por favor prepara:**

- 2.5mm Allen key *included in the maintenance kit*
- Belt tension meter *included in the maintenance kit*
- White paint marker (optional)

① You can use it later to mark a more visible reference point for the ideal position on the belt tension meter.

PASO 3 Printer preparing



- **Cool down the printer.** Go to *More* -> *Temperature* -> *Cooldown*. Wait till the printer is cooled down!
- ⚠ **Do not open the printer until the printer is fully cooled down to ambient temperature.**
- Move the print head to the home position. On the printer's main screen, hit *Home* and wait until all axes are fully homed.
- ⚠ **Do not open the door during this process.**

PASO 4 Positioning the belt tension meter



- i** The process is shown on the rear belt for best access but applies to all three belts.
- Locate the second silver screw from the bottom on the linear rail.
- Take the belt tension meter and position it so the indicator faces downward.
- Guide the belt under the middle pin and over the upper pin.
- i** It doesn't matter whether you choose the left or right belt guide.
- Make sure the upper pin is aligned with the second silver screw.
- Insert the lower pin under the belt.
- Maintain the belt tension meter's position, aligned with the second silver screw.

PASO 5 Tensioning the belt

How to tension the belts (HT90)



- Take a close look at the belt tension meter and check the position of the indicator showing the belt tension level.
 - ◆ The **optimal position is centered** between H (too tight) and L (too loose).
- ⓘ Tip: Use a white paint marker to mark the ideal position for better visibility.
- **If the indicator is not in the optimal position:**
 - ◆ Use the 2.5mm Allen key to tighten or loosen the screw.
 - ◆ After every quarter to half turn, check the position of the indicator.
 - Once the indicator reaches the optimal position, leave the screw as it is.
 - **Use the same procedure for the remaining belts.**

PASO 6 All done!



- ◆ **Congratulations!**
You have successfully adjusted the belt tension on the Prusa Pro HT90.
- ◆ You can now use your printer as usual.
