

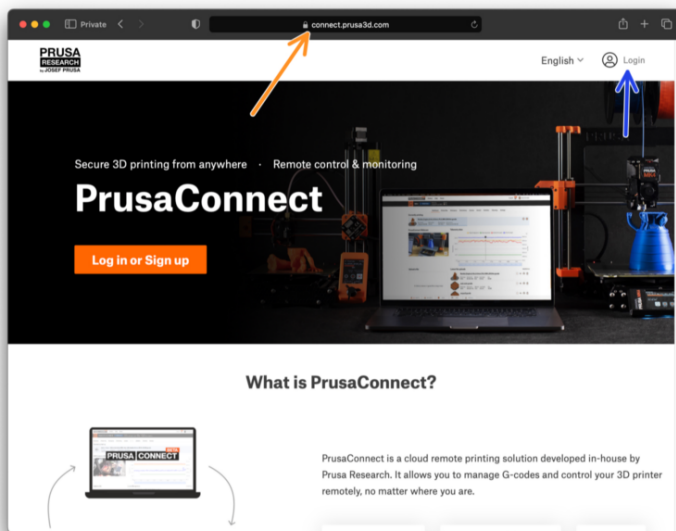
# Table of Contents

## **Adding the printer to Prusa Connect (CORE One, MK4/S, MK3.9/S, MK3.5/S, XL, MINI/+)**

|  |    |
|--|----|
| .....  | 3  |
| Step 1 - Introduction .....                        | 5  |
| Step 2 - Turn on Prusa Connect .....               | 6  |
| Step 3 - Adding the printer to Prusa Connect ..... | 7  |
| Step 4 - Preparing the printer .....               | 8  |
| Step 5 - Uploading G-code to Prusa Connect .....   | 9  |
| Step 6 - Printing from Prusa Connect .....         | 9  |
| Step 7 - Prusa Connect file management .....       | 10 |



# Adding the printer to Prusa Connect (CORE One, MK4/S, MK3.9/S, MK3.5/S, XL, MINI/+)

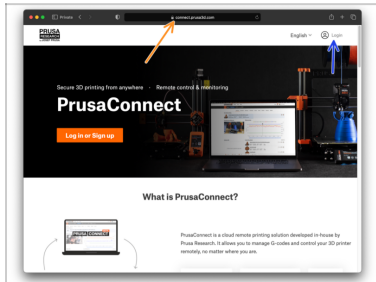


[help.prusa3d.com/g417586](https://help.prusa3d.com/g417586)

**Scan the QR code to  
display the latest  
version of this  
chapter.**



## STEP 1 Introduction



- 🟡 To be able to control your printer from anywhere in the world, register your printer to **Prusa Connect**, the remote control cloud service.
- 📘 This guide is valid for **Prusa CORE One, MK4/S, MK3.9/S, MINI/+** and **XL** machines. If you plan to use another printer type or just crave for more info, visit the Prusa Connect and PrusaLink explained article.
- ⚠️ **First, make sure your printer successfully connected to the Internet as explained in the [Wifi + PrusaLink setup](#) guide or the [Network Connection](#) article.**
- 🟡 Visit **Connect.Prusa3D.com** website and **log in** using your Prusa Account.

Adding the printer to Prusa Connect (CORE One, MK4/S,  
MK3.9/S, MK3.5/S, XL, MINI/+)

## STEP 2 Turn on Prusa Connect



- ◆ On your printer, navigate to **Settings > Network > Prusa Connect**
- ◆ Set Prusa Connect to **Enabled**.
- ◆ Select **Add printer to Connect**
- ◆ Wait until the unique Prusa Connect **Code** is generated.
  - ◆ **Scan the QR code with your phone** or write down the code for manual entry.

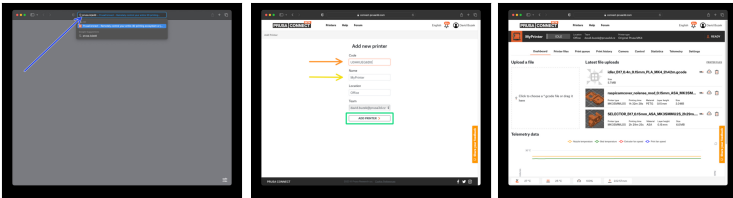
⚠ **Do not hit the Leave button on the printer yet!!**  
**Otherwise, it won't be able to connect.**



If the printer failed to obtain the Code and the Registration failed screen appears, verify the network connection, perform a factory reset and repeat the process until the Code appears.

Adding the printer to Prusa Connect (CORE One, MK4/S,  
~~MK3.9/S, MK3.5/S, XL, MINI/+)~~

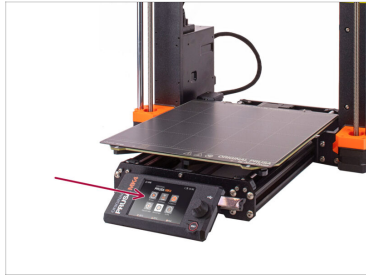
## STEP 3 Adding the printer to Prusa Connect



- i In case you have scanned the QR code, follow the on-screen instructions and skip this step.
- In your browser, navigate to [Prusa.io/add](https://Prusa.io/add) page.
- Enter the **Code**.
- Add up the **Name** and **Location** description for the printer.
- Select **Add printer**.
- You will get to the printer's details page.

Adding the printer to Prusa Connect (CORE One, MK4/S,  
MK3.9/S, MK3.5/S, XL, MINI/+)

## STEP 4 Preparing the printer

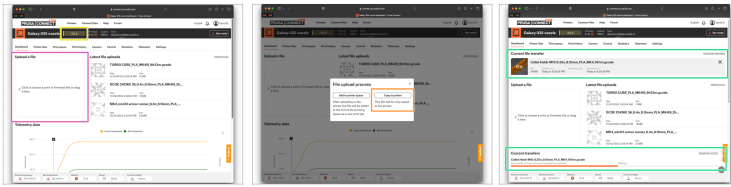


- **After** the Prusa Connect registration is **done**, select **Leave** on the printer's LCD.
- Make sure the printer is ready to print:
  - There must be a **USB drive** in the printer.
  - An empty, clean and degreased **steel sheet** must be attached on the heatbed.
- ⚠ **The printer must be on the home screen. If there is any prompt on the LCD screen, the printer will reject any remote command.**

Adding the printer to Prusa Connect (CORE One, MK4/S,  
MK3.9/S, MK3.5/S, XL, MINI/+)

---

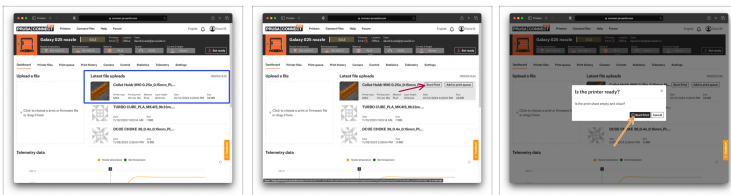
## STEP 5 Uploading G-code to Prusa Connect



- ⬢ Wait until the printer status in Prusa Connect is **IDLE**
- ⬢ Drag&drop a **G-Code** file you wish to print into the marked area of the page.
- ⬢ Select **Copy to printer**.
- ⬢ The file will be uploaded to the cloud and then sent to your printer. The process can be monitored in the Current transfers window.

---

## STEP 6 Printing from Prusa Connect

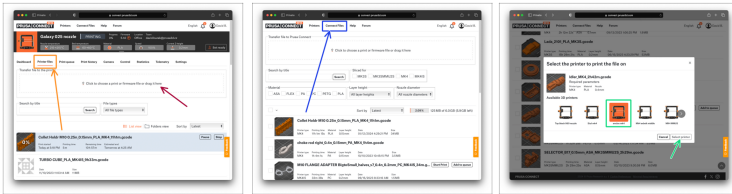


- ⬢ After the file uploads successfully, it will appear in the Latest file uploads section.
- ⬢ Hover over the file you wish to print and select **Start Print**.
- ⬢ Verify the printer is ready and confirm by selecting **Start Print**.

Adding the printer to Prusa Connect (CORE One, MK4/S,  
MK3.9/S, MK3.5/S, XL, MINI/+)

---

## STEP 7 Prusa Connect file management



- To browse the files **stored on the printer's USB drive**, visit the **Printer Files** tab on the Printer details page.
- To upload a file directly to the printer, simply drag it into the marked area on this page.
- If you get to the **Connect Files** section via the link on top of the page, you will get access to all your files stored **on the cloud storage**.
- When starting a print from there, you can select a printer to use, in case you use more than one.



---

---

---

---

---

---

---

---

---

---



---

---

---

---

---

---

---

---

---

---



---

---

---

---

---

---

---

---

---

---