

Table of Contents

1. Introduction	3
Step 1 - Introduction	4
Step 2 - How to navigate through the manual	4
Step 3 - View high resolution images	5
Step 4 - Tools included in the package	5
Step 5 - Prusa Cheatsheet	6
Step 6 - Let's get everything set up!	6
2. Unpacking the printer	7
Step 1 - Preparing the package	8
Step 2 - Removing the box	8
Step 3 - Removing the cardboard layer	9
Step 4 - Anti-vibration feet: parts preparation	9
Step 5 - Sticking the anti-vibration feet	10
Step 6 - Removing the inside protections	10
Step 7 - Preparing the Tool pack	11
3. Mounting the xLCD	12
Step 1 - Tools necessary for this chapter	13
Step 2 - Removing the bezel	13
Step 3 - xLCD assembly: parts preparation	14
Step 4 - Connecting the xLCD assembly	14
Step 5 - Mounting the xLCD	15
Step 6 - Attaching the display assembly	16
Step 7 - Peeling off the protectives	16
4. Calibration & First run	17
Step 1 - Print sheet and spool holder	18
Step 2 - Firmware update	18
Step 3 - Turning it ON	19
Step 4 - Setting up the printer: Intro	19
Step 5 - Setting up the printer: Network setup	20
Step 6 - Wizard: Intro	21
Step 7 - Wizard: Loadcell Test	22
Step 8 - Wizard: Gearbox Alignment	22
Step 9 - Wizard - Filament Sensor Calibration	23
Step 10 - Wizard complete	23
Step 11 - Handbook	24
Step 12 - Give us feedback	24
Step 13 - Prusa knowledge base	25
Step 14 - Join Printables!	25
Manual changelog	26
Step 1 - Version history	27

1. Introduction

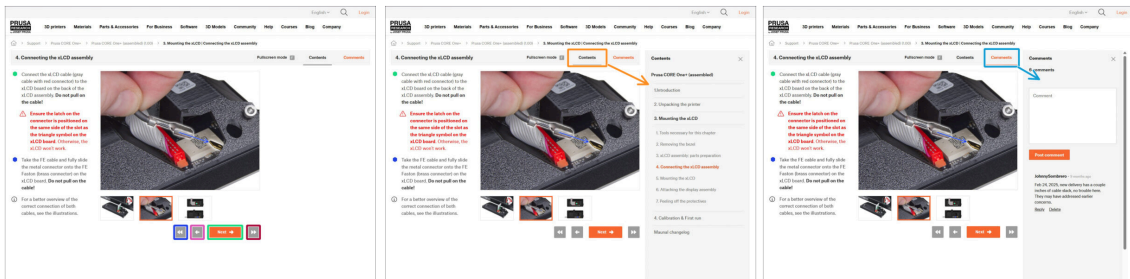


STEP 1 Introduction



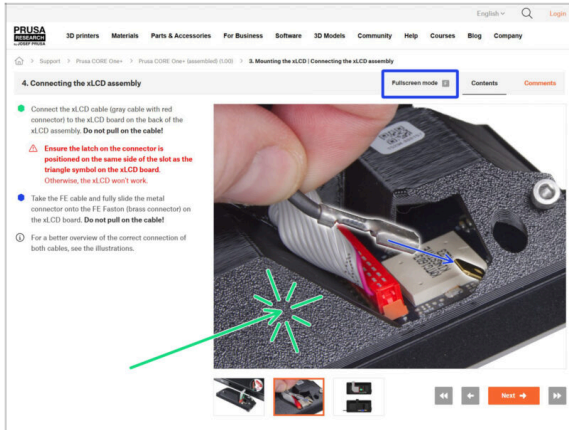
- 🛡️ Welcome to the guide for unboxing, calibrating, and setting up your **Prusa CORE One+**. Follow these steps to ensure your printer is ready for its first print.
- 📄 Although the Prusa CORE One+ comes pre-assembled, the LCD must be installed before printing, as it is removed for transport protection.
- ⚠️ **Do not install the LCD at this moment; wait for the appropriate instructions later in the guide.**
- 📦 We recommend keeping all the packaging material in case you decide to send the printer for service.

STEP 2 How to navigate through the manual



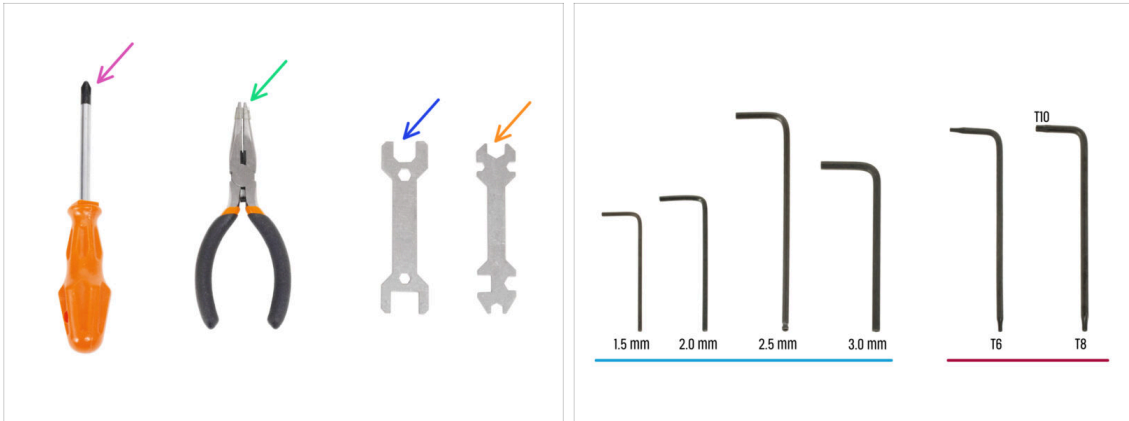
- 🛡️ Use the graphical navigation buttons in the bottom right corner or the arrow keys on your keyboard:
 - ➡️ **Next button / Right arrow key** - Moves to the next image, or to the next step if it's the last image in the step.
 - ⬅️ **Left arrow button / Left arrow key** - Moves to the previous image, or to the previous step if it's the first image in the step.
 - ⏮️ **Play backward button / Up arrow key** - Moves to the previous step.
 - ⏭️ **Play forward (Next) button / Down arrow key** - Moves to the next step.
 - 📄 Click on **Contents** to expand the full list of steps in this guide. This allows you to jump to any step regardless of the sequence.
 - 💬 Click on **Comments** to open the discussion for a specific step and leave your feedback.

STEP 3 View high resolution images



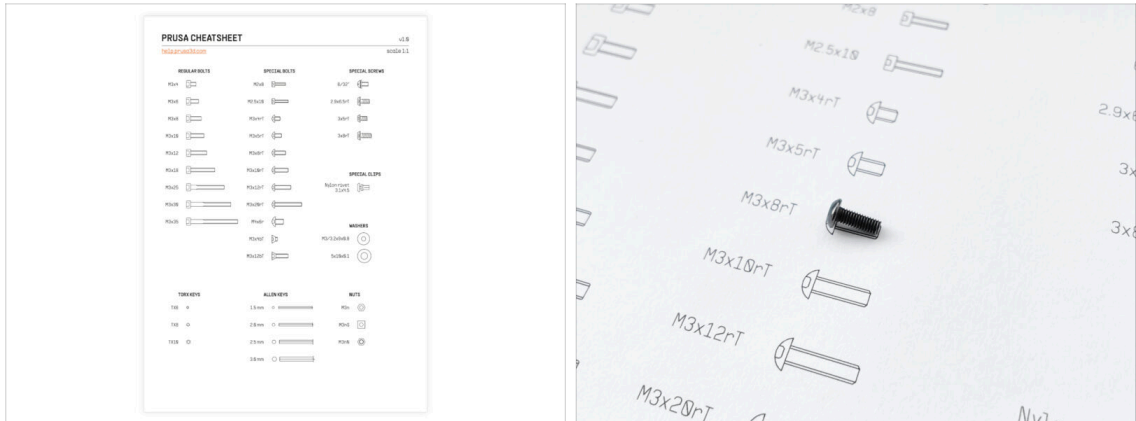
- ◆ When you browse the guide on help.prusa3d.com, you can view the original images in high resolution for clarity.
- ◆ Just click on the image to open it in high resolution for a detailed view.
- ◆ Click on **Fullscreen mode** or press the F key to maximize your screen space and focus entirely on the instructions.

STEP 4 Tools included in the package



- ◆ Your Prusa CORE One+ package includes all the tools for printer operation and maintenance:
 - ◆ Phillips (PH2) screwdriver (1x)
 - ◆ Needle-nose pliers (1x)
 - ◆ Wrench size 13 mm (1x)
 - ◆ Universal wrench (1x)
 - ◆ Allen key set 1.5 mm - 3.0 mm
 - ◆ Torx key set T6 - T10
- ◆ You will come across the tool pack during unpacking the printer, we will let you know.
- i For this guide, you will only need the 2.5 mm Allen key.

STEP 5 Prusa Cheatsheet



- If you're unsure whether you're using the correct screw type or size, our cheatsheet will help you. Print it at a 1:1 scale and place the fastener on the corresponding drawing to compare its type and size.

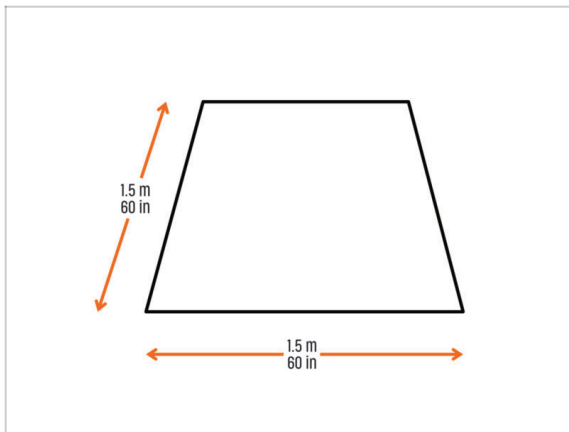


You can download the cheatsheet on prusa.io/core-one-cheatsheet.



This guide doesn't involve screws or nuts, but this option may be useful for future maintenance.

STEP 6 Let's get everything set up!



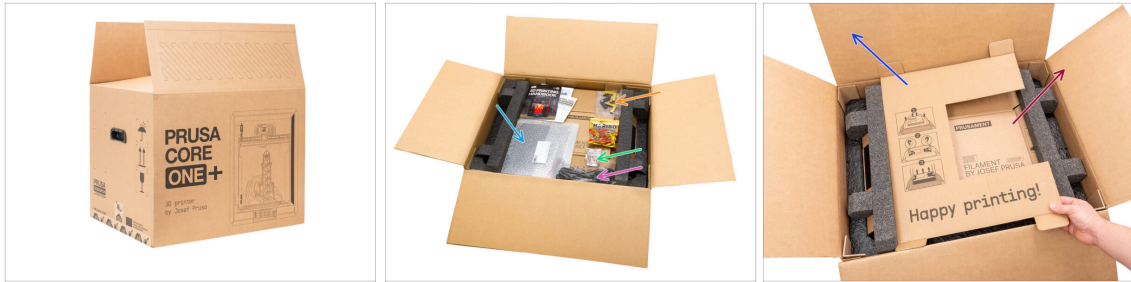
CAUTION: The package is heavy—handle it with care!


- Make sure you have enough space to prepare the printer. **A clean space is essential.**
- **i** A minimum of 1.5 x 1.5 meters (60 x 60 inches) is recommended.
- Bring your family, friends, or pets—this will be engaging!
- Continue to the next chapter: **2. Unpacking the printer.**

2. Unpacking the printer



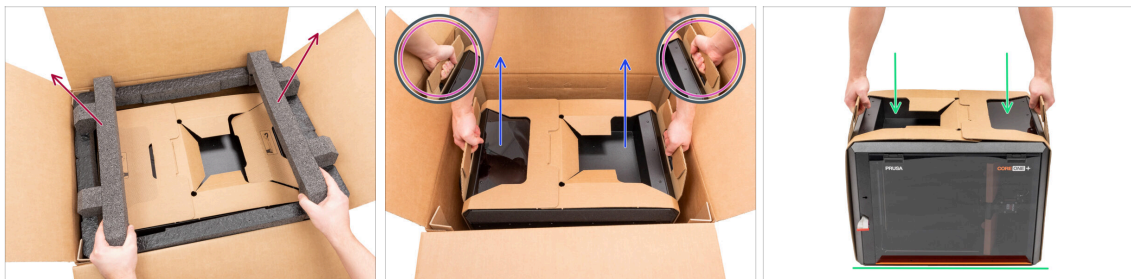
STEP 1 Preparing the package



 **The package fixations and foam inserts may vary.**

- Open the package. On the top layer, you will find Haribo gummy bears, a 3D printing handbook, a welcome letter, other documentation, and these components:
 - Print sheet
 - USB drive
 - Power cord
 - Anti-vibration bars (2x) / Anti-vibration feet (4x)
Products and packaging may vary.
- Remove these items from the package and place them in a safe spot for later use.
- Remove the cardboard protection layer.
- Take out the Prusament box and set it aside.


STEP 2 Removing the box



- Remove top foam fixation.
- Notice the two cutouts (handles) on both sides of the cardboard layer. Bend them downward.

 **CAUTION: The printer is heavy—handle it with care!**

- Grasp both handles and **CAREFULLY** lift the printer out of the box.

 **Tip:** Ask someone to hold the bottom cardboard box in place to make it easier to lift the printer out.

- Place the printer on a **stable and clean surface**.

STEP 3 Removing the cardboard layer



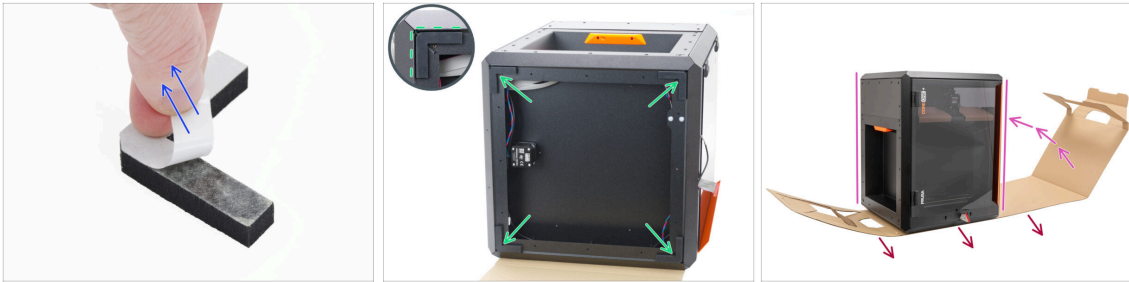
- ◆ Detach the two ends of the cardboard protective layer from each other by pulling the upper layer out.
- ◆ Fold down the cardboard protective layer away from the printer.

STEP 4 Anti-vibration feet: parts preparation



- ◆ For the following steps, prepare:
 - ◆ Anti-vibration foot (4x)

STEP 5 Sticking the anti-vibration feet



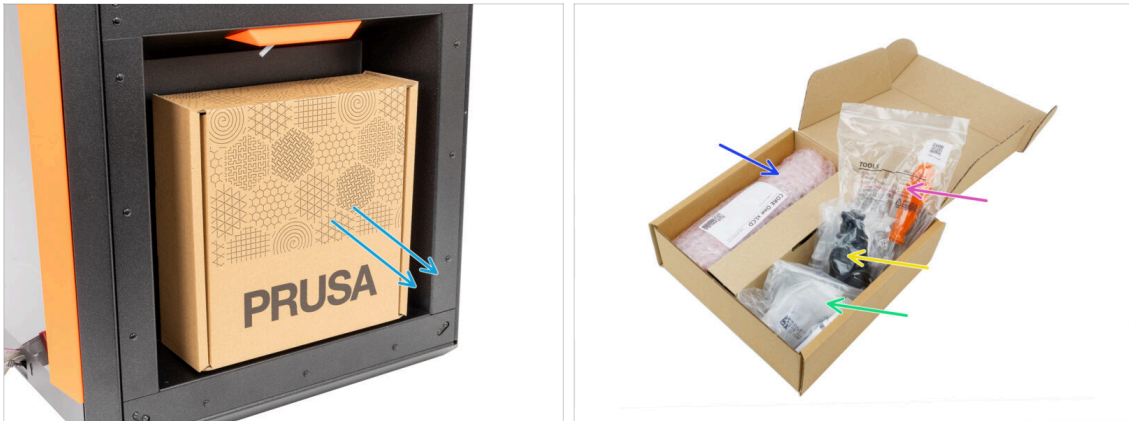
- ◆ Peel off the protective film from all anti-vibration feet.
- ◆ Stick one anti-vibration foot in each corner of the frame. Align it with the outer edge of the flat side of the profile.
- ◆ Carefully turn the printer to its "natural standing position" with the orange door handle on the right side.
- ◆ Now, you can completely remove the cardboard layer from the printer.

STEP 6 Removing the inside protections



- ◆ Open the door.
- ◆ Locate two cardboard fixtures on the X-axis. There is a notch that releases the fixation.
- ◆ Pull the notch, release, and remove the fixture.
- ◆ Using the same method, remove the second fixture.

STEP 7 Preparing the Tool pack

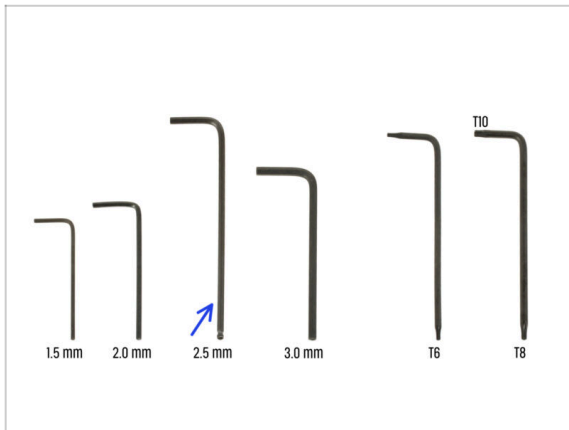


- The tool pack is located on the right side of the printer.
- Remove the cardboard tool pack from the printer.
- Open the tool pack completely. **Inside, you will find:**
 - xLCD assembly package
 - Tools package
 - Spool-holder and O-ring
 - Accessories
- Keep the content aside for later use. Now let's go to the next chapter: **3. Mounting the xLCD**

3. Mounting the xLCD

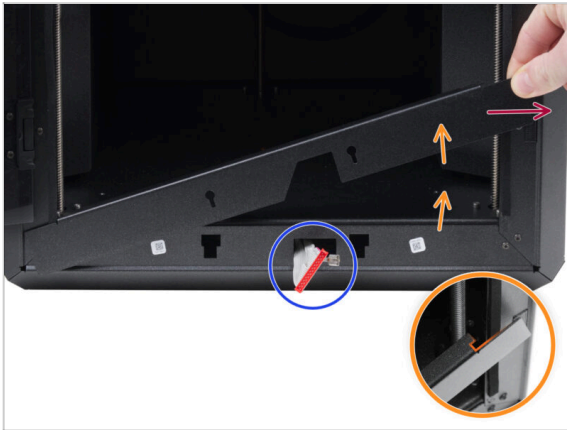


STEP 1 Tools necessary for this chapter



- For this chapter, please prepare:
- 2.5mm Allen key

STEP 2 Removing the bezel



- Open the door fully.
- Lift the right end of the front bezel and unhook it from the printer frame.
- Pull the bezel out of the printer. Do not discard the part.
- ⚠ **Proceed carefully to avoid scratching the parts or damaging the door.**
- ⓘ The bezel is attached to the printer with magnets, making it easy to remove.
- Note the cables coming from the printer. We'll address them shortly. **Avoid pushing them into the printer, keep them as they are.**

STEP 3 xLCD assembly: parts preparation



- ◆ For the following steps, please prepare:
- ◆ xLCD assembly (1x)

STEP 4 Connecting the xLCD assembly



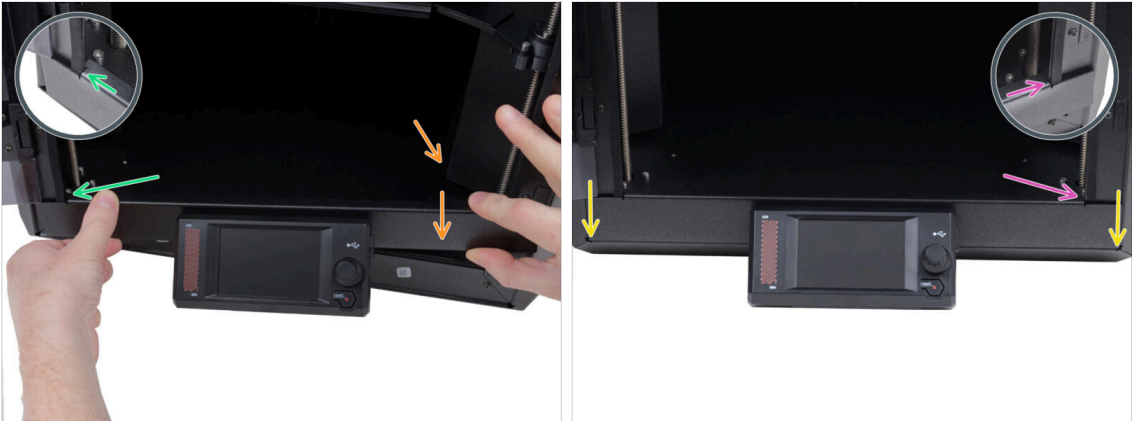
- ◆ Connect the xLCD cable (gray cable with red connector) to the xLCD board on the back of the xLCD assembly. **Do not pull on the cable!**
- ⚠ **Ensure the latch on the connector is positioned on the same side of the slot as the triangle symbol on the xLCD board. Otherwise, the xLCD won't work.**
- ◆ Take the FE cable and fully slide the metal connector onto the FE Faston (brass connector) on the xLCD board. **Do not pull on the cable!**
- ⓘ For a better overview of the correct connection of both cables, see the illustrations.

STEP 5 Mounting the xLCD



- Install the bezel onto the screws on the back of the xLCD assembly.
- **Ensure the magnets face upward.** The bezel has four magnets, but only two are visible in the picture.
- **Ensure both screws (M3x6) are not fully tightened,** leaving approximately a 3 mm (1/8 inch) gap between the screw head and the xLCD cover.
- Slide the bezel toward you, ensuring both screws are positioned at the end of the keyhole-shaped holes.
- Keep the bezel in position and fully tighten both screws.

STEP 6 Attaching the display assembly



- Carefully install the display assembly (xLCD and bezel) onto the printer using the following procedure:

⚠ **Proceed carefully to avoid scratching the parts or damaging the door.**

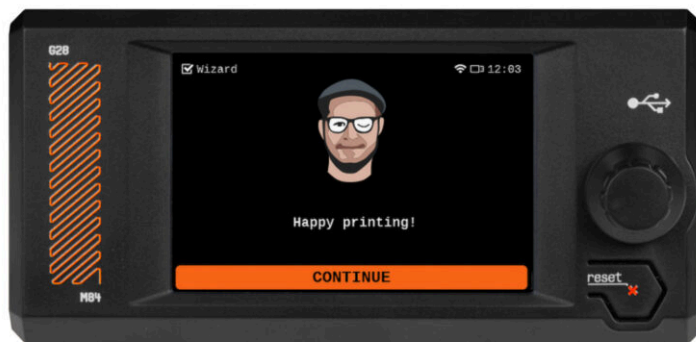
- Hook the left side of the bezel onto the left frame of the printer, ensuring the square cutout is securely attached to the frame.
- Slowly lower the right side into place as well.
- Secure the right side of the bezel onto the right frame of the printer, ensuring the square cutout is securely attached to the frame.
- Ensure the **bezel is evenly seated at both ends along the bottom edge** — test it by closing the door slowly to check if the bezel obstructs movement.

STEP 7 Peeling off the protectives



- Now, you can remove the protective films from the transparent panels on the printer.
- The protective film is located on the top, left, and right sides of the printer.
- We are almost there! Let's go to the last chapter: **4. Calibration & First run**

4. Calibration & First run



STEP 1 Print sheet and spool holder

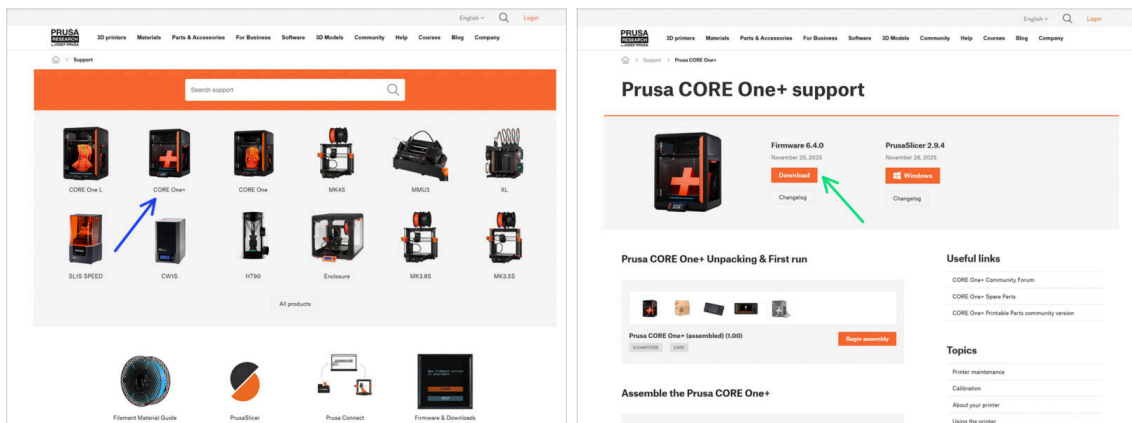


i This chapter will guide you through calibrating and preparing the printer for its first run.

! **Make sure there is nothing on the heatbed.** The heatbed must be clean. Any dirt can damage the surface of both the heatbed and the print sheet.

- 🟡** Attach the sheet by first aligning the rear cutout with the locking pins on the back of the heated bed. Hold the sheet by the front two corners and slowly lay it down onto the heated bed - **watch your fingers!**
 - ⬛** Keep the **print sheet** clean for optimum performance.
 - ⬛** #1 cause of prints detaching from the print surface is a greasy print sheet. Use **IPA (Isopropyl alcohol)** to **degrease it** if you have touched its surface before.
- 🔵** Put the O-ring onto the spoolholder.
- 🟡** Push the spoolholder into the Puck-universal and lock it in by turning clockwise.

STEP 2 Firmware update



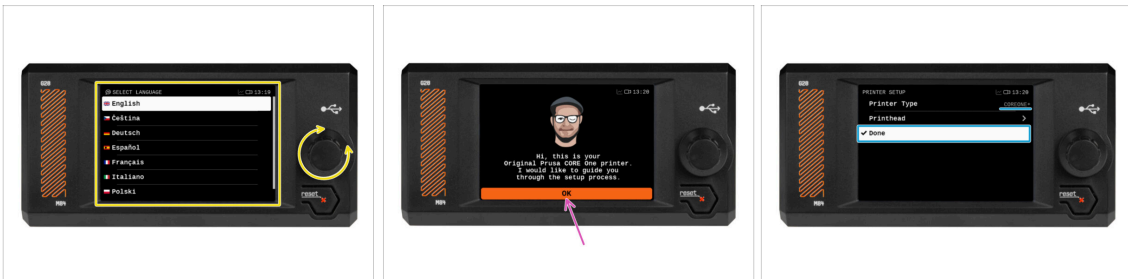
i All shipped printer packages include a USB drive with the latest firmware. However, it is recommended to check and possibly upgrade the firmware version.

- ⬛** Visit the help.prusa3d.com page.
- 🔵** Navigate to the Prusa CORE One+ page.
- 🟢** Save the firmware file (*.bbf*) onto the *bundled USB drive*.

i Pro tip: To access Prusa CORE One+ homepage you can use the URL: prusa.io/core-one-plus

STEP 3 Turning it ON

- ✿ Insert the USB drive included in your kit into your printer.
 - ❶ The included USB drive contains the latest firmware file.
- ✿ Connect the power cable and plug the printer into a wall outlet.
- ✿ Turn the printer on using the switch on the back.
- ❶ The printer will now detect if a new firmware file is available on the USB drive.
- ✿ If the "New firmware available" screen appears, hit **FLASH** by pressing the rotary knob to upgrade to the latest firmware.
 - ✿ If no such message appears, the printer is running the latest firmware already. Proceed to the next step.

STEP 4 Setting up the printer: Intro

- ✿ The printer displays on the screen a prompt to select your language. Use the control knob or touchscreen to set your preference.
- ✿ After selecting your language, the printer will display the welcome screen. Hit **OK** to continue through the setup process.
- ✿ The next screen will prompt you to select your printer model. Since the assembled Prusa CORE One is fully tested in our facility, it has been pre-selected to COREONE+ during these tests. Hit **Done** to continue.

STEP 5 Setting up the printer: Network setup



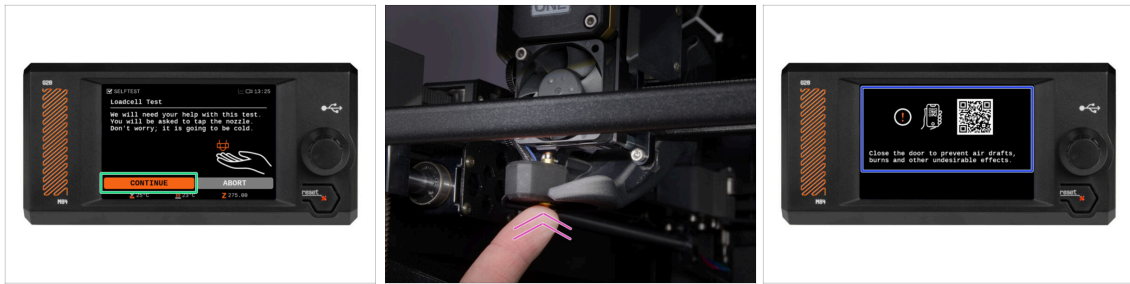
- The Network Setup screen will ask you to connect to a Wi-Fi network using our official Prusa mobile app.
 - ⓘ Read more on prusa.io/app.
- If you select **No**, the printer will show alternative ways to connect to Wi-Fi. This step is optional and can be done later.
 - ⓘ You can skip this screen and set up the network connection later.

STEP 6 Wizard: Intro



- i The printer will prompt you to run self-tests and calibrations for all important components. The entire process takes a few minutes, with some parts requiring direct user interaction.
- Although the printer was thoroughly tested at our facility, we highly recommend running the self-test again. Hit **YES** to start the self-test.
- ⚠ **Warning:** During the self-test, **keep the door closed** until you are prompted. Opening the door will interrupt the process.
- **There are HOT and moving parts inside during the self-test.**
- ⚠ **Caution:** Some parts of the Wizard, such as fan testing and axis calibration, **may be loud.**
- The printer will begin by testing all the fans. **Be aware—it will be quite noisy for a while!**

STEP 7 Wizard: Loadcell Test



- ◆ The next step of the wizard will prompt you to touch the nozzle to test and calibrate the Loadcell. During this procedure, the **parts of the printer are not heated up** so that you can touch them. Hit **Continue**.
- ⓘ Loadcell calibration requires the door to be open, as you must interact directly inside the printer.
- ◆ Do not touch the nozzle yet, wait until prompted by the **Tap nozzle NOW** message.
- ◆ Tap the nozzle from below. In case the Loadcell does not detect the touch, you will be prompted to repeat the step. Otherwise, you will see **Loadcell test passed OK** when it succeeds.
- ◆ To allow the printer to continue with the Wizard, **close the door**.

STEP 8 Wizard: Gearbox Alignment



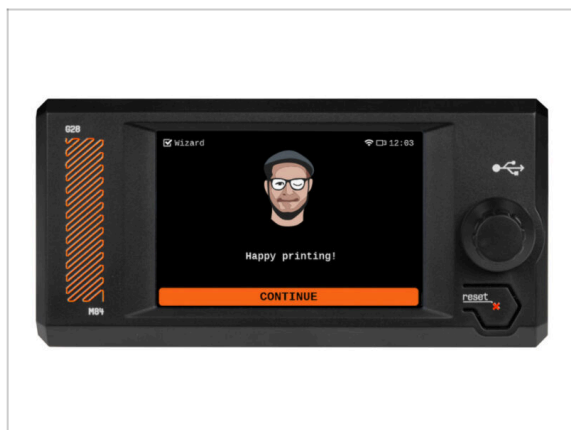
- ◆ The next screen will prompt you to perform gearbox calibration. This step is not necessary for pre-assembled printers from our company.
- ◆ Hit Skip to continue.

STEP 9 Wizard - Filament Sensor Calibration



- ◆ During the filament sensor calibration, you will need to use a short piece of filament. Prepare the filament and select **Continue**.
- ❗ There should be no filament inside the extruder before the calibration process starts.
- Place a spool of filament onto the spool holder on the right side of the printer.
- When prompted, begin inserting the filament into the PTFE tube located beneath the right handle.
- Remove the filament after the calibration finishes.

STEP 10 Wizard complete



- ◆ Congratulations! The Wizard is complete. Now it's time to test some prints.

STEP 11 Handbook



- ◆ Read the **3D Printing Handbook** dedicated to your printer and follow the instructions to set up the printer and prepare it for your first print.



The latest version is always available at prusa.io/core-one-plus.



Read the Disclaimer and Safety instructions chapters.

STEP 12 Give us feedback



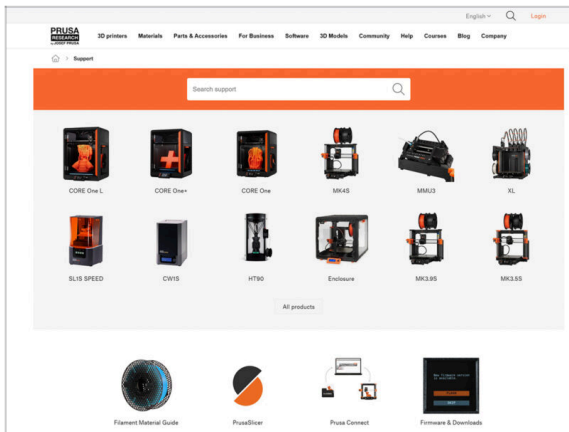
- ◆ We know you're eager to start printing, but we'd really appreciate it if you could take 3–4 minutes to **share your thoughts** on this manual: how clear it was, how easy it was to follow, and any ideas to improve it.



This feedback is a little different from the usual comments you might leave on individual steps.

- ◆ **Share your feedback here.**
- ◆ Thank you for helping us make our manuals even better!

STEP 13 Prusa knowledge base

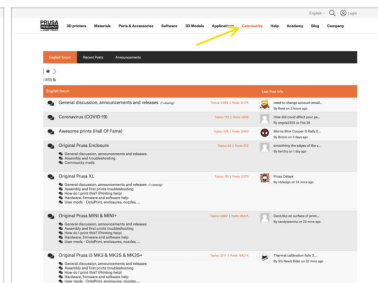
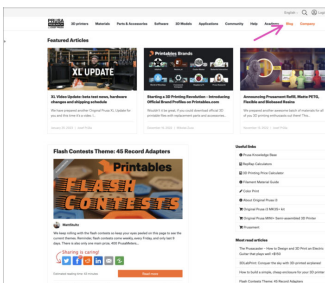
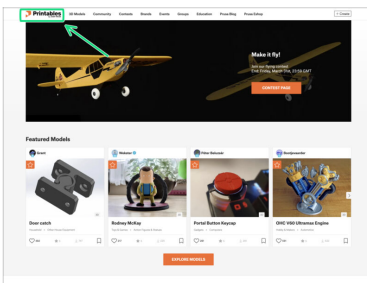


If you encounter any problems at all, don't forget you can always check out our knowledge base at help.prusa3d.com



We're adding new topics every day!

STEP 14 Join Printables!



- 🟢 Don't forget to join the biggest Prusa community! Download the latest models in STL or G-code tailored for your printer. Register at [Printables.com](https://printables.com)
- 🟣 Looking for inspiration on new projects? Check our blog for weekly updates.
- 🟡 If you need help with the build, check out our forum with a great community :-)
- 📄 All Prusa services share one user account.

Manual changelog



STEP 1 Version history



- ◆ **Versions of the Prusa CORE One+ (assembled) manual:**
- ◆ 11/2025 - Initial version 1.00





