

Table of Contents

1. Introduction	3
Step 1 - Introduction	4
Step 2 - Navigating through the manual	4
Step 3 - View high resolution images	5
Step 4 - Tools included in the package	5
Step 5 - Prusa Cheatsheet	6
Step 6 - Reward yourself!	6
Step 7 - Additional information	7
2. Unpacking the printer	8
Step 1 - Opening the main box	9
Step 2 - Accessing the printer box	10
Step 3 - Removing the printer box	11
Step 4 - Accessing the printer	11
Step 5 - Removing the printer from the box	12
Step 6 - Removing the bottom cardboard	12
3. Preparing the printer	13
Step 1 - Tools necessary for this chapter	14
Step 2 - Removing the protective films	14
Step 3 - Removing the X-axis protection	15
Step 4 - Preparing the LCD panel (part 1)	15
Step 5 - Preparing the LCD panel (part 2)	16
Step 6 - Removing the LCD panel protection	16
Step 7 - Attaching the LCD panel	17
Step 8 - Removing the heatbed screws	17
Step 9 - Attaching the Buddy3D camera	18
Step 10 - Attaching the spool holder	18
4. First run	19
Step 1 - Turning the printer ON	20
Step 2 - Setting up the printer: Intro	20
Step 3 - Setting the printer up: Network setup	21
Step 4 - Setting the printer up: Heatbed screws	21
Step 5 - Setting the printer up: Door sensor	22
Step 6 - Setting the printer up: Finish	22
Step 7 - Connecting the Buddy3D Camera	23
Step 8 - Handbook	23
Step 9 - Prusa Support	24
Step 10 - Prusa Academy	24
Step 11 - Join Printables!	25
Manual changelog	26
Step 1 - Version history	27

1. Introduction



STEP 1 Introduction

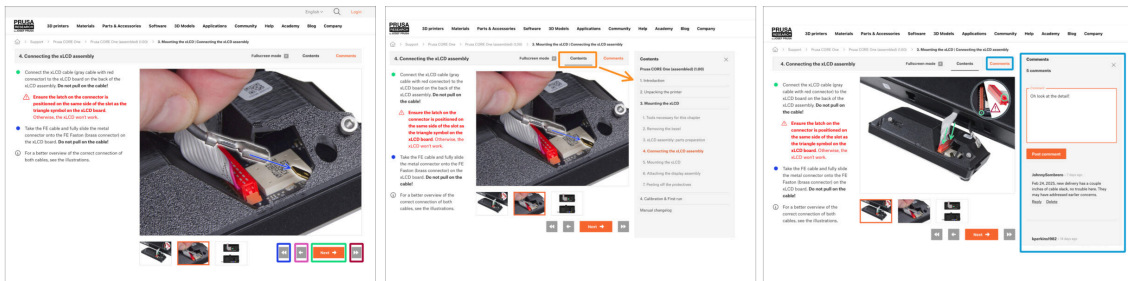


- Welcome to the guide for unboxing and setting up your **Prusa CORE One L**. Follow these steps to ensure your printer is ready for its first print.

- Although the Prusa CORE One L comes pre-assembled, there are a few things that need to be done before you can start printing.

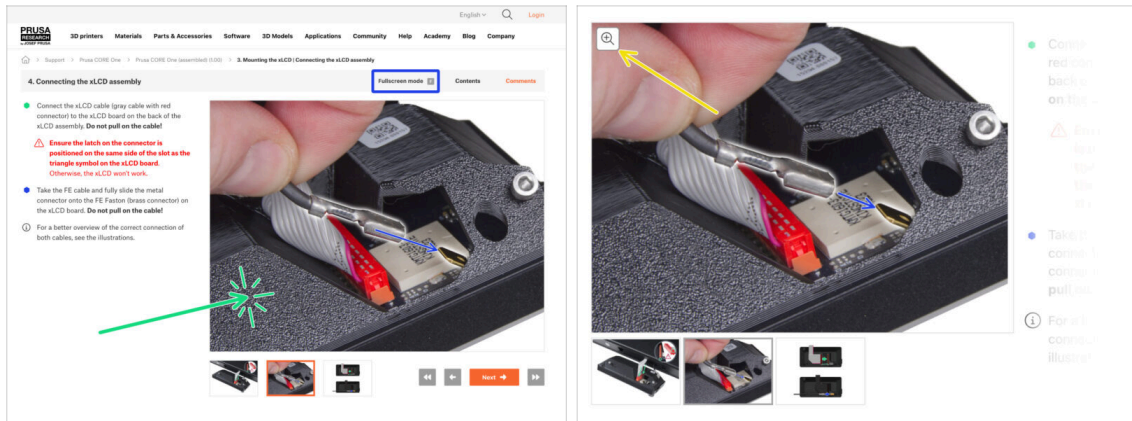
- We recommend keeping all the packaging material in case you decide to send the printer for service.

STEP 2 Navigating through the manual



- Use the graphical navigation buttons in the bottom right corner or the arrow keys on your keyboard:
 - Next button / Right arrow key** - Moves to the next image, or to the next step if it's the last image in the step.
 - Left arrow button / Left arrow key** - Moves to the previous image, or to the previous step if it's the first image in the step.
 - Play backward button / Up arrow key** - Moves to the previous step.
 - Play forward (Next) button / Down arrow key** - Moves to the next step.
- Click on **Contents** to expand the full list of steps in this guide. This allows you to jump to any step.
- Click on **Comments** to open the discussion for a specific step and leave your feedback.

STEP 3 View high resolution images



- When you browse the guide on help.prusa3d.com, you can view the original images in higher resolution for clarity.
- Click on the image to open it in higher resolution for a detailed view.
- You can also hover your cursor over the image and click the magnifying glass button ("View original") in the top left corner.
- Click on **Fullscreen mode** or press the F key to maximize your screen and focus entirely on the instructions.

STEP 4 Tools included in the package



- Your Prusa CORE One L package includes tools for printer operation and maintenance:
 - Wrench size 13 mm (1x)
 - Universal wrench (1x)
 - Allen key 2.5 mm
 - Torx screwdriver T10
 - Needle-nose pliers (1x)

STEP 5 Prusa Cheatsheet



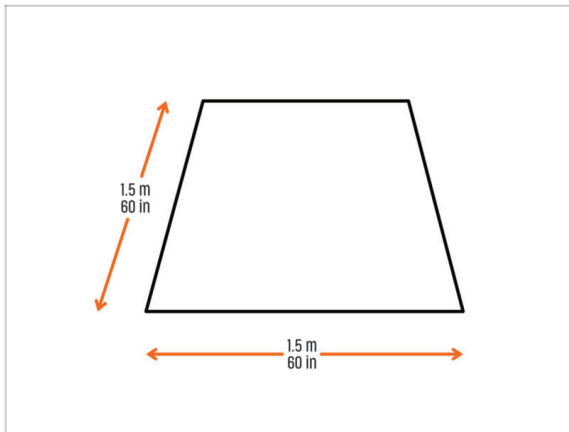
- Our cheatsheet will help you every time you are not sure if you are using the correct tool type or size. Place the fastener on the corresponding print to compare its type and size.
- 📌 You can download the cheatsheet on prusa.io/col-cheatsheet.
- Print the cheatsheet at a 1:1 scale. Or **check the other side of the welcome letter** you received with your CORE One L.
- ❗ This guide does not involve screws or nuts. However, the cheatsheet will be useful for future maintenance.

STEP 6 Reward yourself!



- ❗ We bear good news. As a reward, we include a sleuth of bears with our printer.
- ⚠️ **Gummy bears! Otherwise, that would be frightening. Shipping costs would be astronomical, and the customs process would get really weird.**
- The idea is to eat these once the setup is completed and you wait for your first print.
- But you can dig in at any point if you find the waiting... bear with me here... unbearable.

STEP 7 Additional information



CAUTION: The package is bulky and heavy - handle with care. We recommend lifting the box with someone else's help.



Make sure you have enough space to set the printer up. **A clean space is essential.**



A minimum of 1.5 x 1.5 meters (60 x 60 inches) is recommended.



Continue to the next chapter: **2. Unpacking the printer.**

2. Unpacking the printer



STEP 1 Opening the main box



⚠ CAUTION: The package is bulky and heavy - handle with care!

- The package fixations and foam inserts may vary slightly.
- ① The packaging contains two boxes: the main box and the printer box within.
 - 📌 We recommend keeping the main box on the floor. The printer box will be lifted off the main box and placed on your work surface.
- Move the main box using the handles on the side.
- Cut through the adhesive tape in the highlighted places.
- The packaging includes a visual representation of the unpacking instructions.

STEP 2 Accessing the printer box



Once you open the main box, remove all items stored in the top cardboard sheet and inside the two foam inserts on the sides.



The middle section contains:

- Welcome letter/cheatsheet
- Satin print sheet
- 3D printing handbook
- Hardened 0.4 mm nozzle
- Power cord
- USB drive
- Haribo gummy bears



Side section contains:

- Tools
- Accessories



Side section contains:

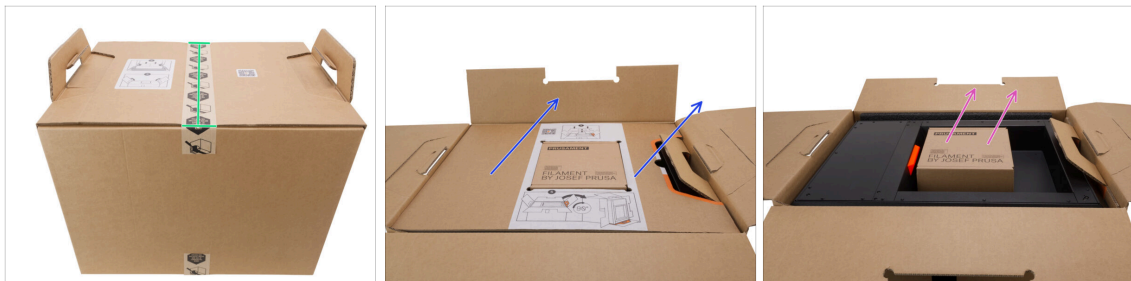
- Buddy3D camera
- Spool holder

STEP 3 Removing the printer box



- Remove the middle cardboard section.
- Remove the two side foam inserts.
- Use the handles on the printer box to lift the printer from the main box. Place the printer box on your work surface.
- ❗ Stand as close to the box as you can. Make sure that your hands have a good grip on the handles. Squat down and lift with your knees, not your back.

STEP 4 Accessing the printer



- Cut through the adhesive tape in the highlighted area.
- Remove the top cardboard insert.
- Remove the Prusament box.

STEP 5 Removing the printer from the box



- Note the cardboard handle. It shows you where the bottom of the printer is.
- Carefully flip the printer box on its side (one with the handle) so that the printer is in an upright position.
- Remove the protective foam insert.
- Firmly grab the handle and slowly pull the printer completely out of the box.
- ⓘ We recommend that you store all the boxes and protective inserts in case you need to ship the printer for service in the future.

STEP 6 Removing the bottom cardboard



- Lift the printer on the handle side of the bottom cardboard.
- The cardboard flap will release, and the printer can now be removed from the bottom cardboard.
- Set the printer down and carefully push it off the cardboard slightly - just so that the feet now stand on the surface.
- Lift the printer again and slide the bottom cardboard away from under the printer.
- 🔗 We recommend that you keep the complete packaging for possible later use.
- Well done! With the printer unpacked, let's go to the next chapter: **3. Preparing the printer**

3. Preparing the printer



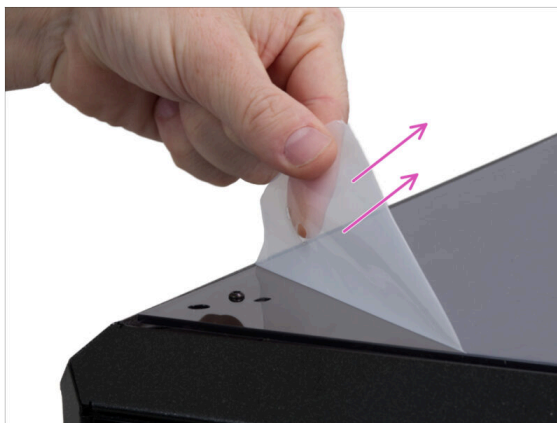
STEP 1 Tools necessary for this chapter



● For this chapter, please prepare:

- 2.5mm Allen key
- Needle-nose pliers

STEP 2 Removing the protective films



- Remove the sticker that instructs you never to clean the panels with IPA.
- Remove the protective films from the top and door panels.

STEP 3 Removing the X-axis protection



- Open the door.
- Locate two cardboard inserts on the X-axis. Pull the notch that releases the flap and remove it.
- Using the same method, remove the second insert.

STEP 4 Preparing the LCD panel (part 1)



- ⚠ In the next few steps, make sure not to damage the LCD cables.
- Gently pull out the LCD panel cardboard insert from the slit at the bottom of the printer - just enough to release it.

STEP 5 Preparing the LCD panel (part 2)



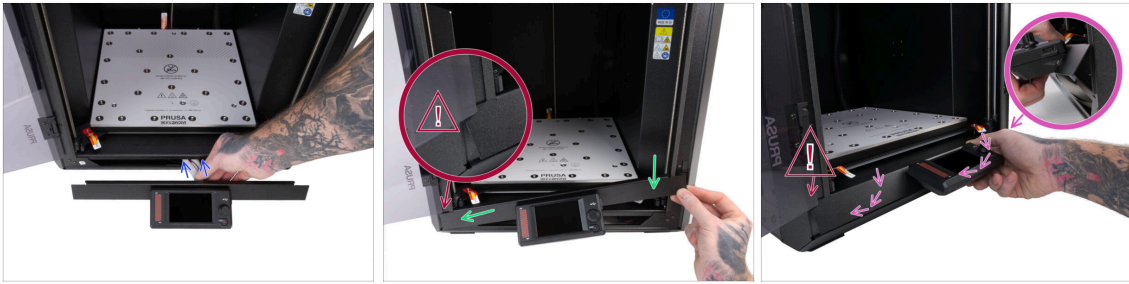
- ◆ Lift the right side of the LCD panel.
- ◆ Pull the right side of the LCD panel towards you.
- ◆ Remove the LCD panel from the printer gently; do not pull the LCD cables.

STEP 6 Removing the LCD panel protection



- ◆ Place the LCD panel on the work surface with the display facing down.
- ◆ Make sure not to damage or pull the LCD cables.
- ◆ Cut the zip ties with the needle-nose pliers. Make sure to cut only where the pliers can not damage the LCD panel.
- ◆ Remove the foam insert with cardboard from the LCD panel.
- ◆ Remove the plastic protection on each end of the LCD panel.

STEP 7 Attaching the LCD panel



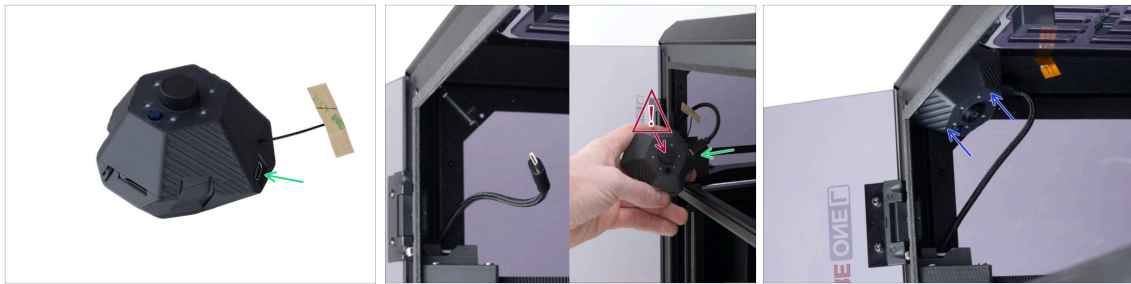
- Flip the LCD panel so the display is facing you.
- Gently push the LCD cables back into the bottom slit.
- ⚠ **Be very careful not to damage the door when attaching the LCD panel.**
- Turn the LCD panel so the left side can click into the frame of the printer. Then push in and lower the right side.
- Attach the LCD panel to the printer at a slight angle to prevent pinching the LCD cables. Be careful not to damage the door.

STEP 8 Removing the heatbed screws



- ⚠ **It is essential to remove the heatbed screws before using your printer!**
- Use the 2.5 mm Allen key to remove all three heatbed screws.
- 📌 Be careful when placing the print sheet; the heatbed magnets are quite strong.
- Attach the print sheet by aligning the rear cutout with the locking pins on the back of the heatbed. Then lay the print sheet down.
- ⓘ #1 cause of prints detaching from the print surface is a greasy print sheet. Use IPA (Isopropyl alcohol) to degrease the print sheet if you have touched its surface.

STEP 9 Attaching the Buddy3D camera



- Unpack the Buddy3D camera from the bubble wrap
- ⓘ The installation and activation of the camera is completely optional.
- Locate the USB-C camera cable in the front, top left corner. Pull it out from the casing and plug it into the Buddy3D camera USB-C slot.
- ⚠ **Make sure to remove the lens cover before using the camera.**
- The Buddy3D camera is magnetic. Make sure that it is positioned as shown in the photos and place it in the top corner.
- The serial number sticker is part of the Buddy3D camera packaging. **Do not dispose of the SN sticker.** Keep it aside for now.

STEP 10 Attaching the spool holder

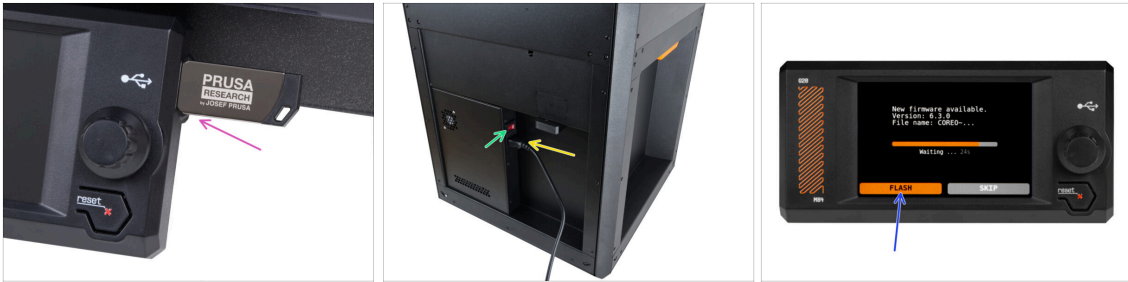


- Put the O-ring on the spoolholder.
- ⓘ The O-ring is in the same bag as the spool holder.
- Push the spoolholder into the dock and lock it in by turning it clockwise.
- Great job! With the printer ready, let's go to the next chapter and fire her up: **4. First run**

4. First run



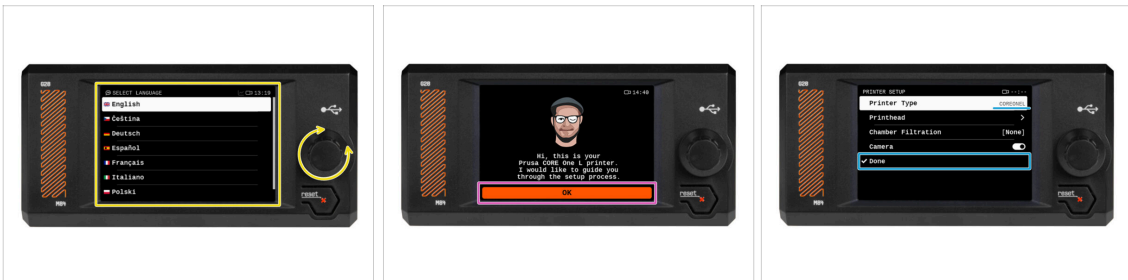
STEP 1 Turning the printer ON



⚠ We **strongly recommend** updating the firmware to the latest version. Do not skip this step.

- ✿ Insert the included USB drive into the printer.
 - ❗ The USB drive contains the **latest firmware file**.
- ✿ Connect the power cable and plug the printer into a wall outlet.
- ✿ Turn the printer on using the switch on the back.
- ✿ The printer displays the “New firmware available” screen. Press the rotary knob to select **FLASH** and update to the latest firmware.

STEP 2 Setting up the printer: Intro



- ✿ The printer displays on the screen a prompt to select your language. Use the control knob or touchscreen to set your preference.
- ✿ After selecting your language, the printer will display the welcome screen. Hit **OK** to continue through the setup process.
- ✿ The next screen will prompt you to select your printer model. Since the assembled Prusa CORE One L is fully tested in our facility, it has been pre-selected to COREONEL during these tests. Hit **Done** to continue.

STEP 3 Setting the printer up: Network setup



- The Network Setup screen will ask you to connect to a Wi-Fi network using our official Prusa mobile app.
- ❗ Read more on prusa.io/app.
- If you select **No**, the printer will show alternative ways to connect to Wi-Fi. This step is optional and can be done later.
- ❗ You can skip this screen and set up the network connection later.

STEP 4 Setting the printer up: Heatbed screws



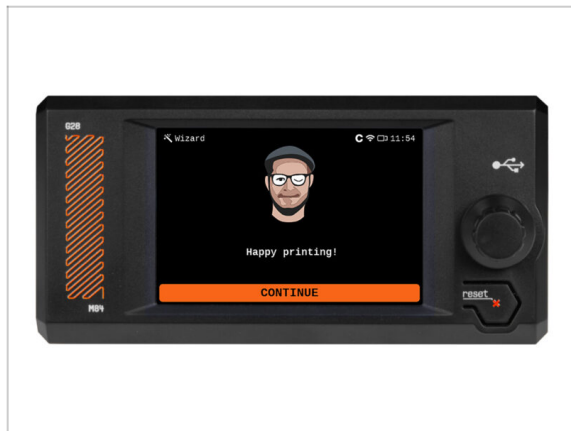
- The printer will now display a prompt to remove the heatbed screws. This was already completed in the previous chapter.
- ⚠ Ensure that all three heatbed screws have already been removed.

STEP 5 Setting the printer up: Door sensor



- ◆ The screen will now prompt you to **enable the door sensor**. It is disabled by default. To activate it, hit **Yes**.
- ◆ When you hit No, the door sensor will remain disabled.
- ⚠ **Important: Disabling the door sensor may cause injury or damage to the printer. Make sure to read the warning carefully. We strongly recommend keeping the door sensor enabled.**
- ⓘ The door sensor can be enabled or disabled at any time. You can find its settings under **Settings-> Hardware -> Door Sensor**.

STEP 6 Setting the printer up: Finish



- ◆ Congratulations! Your printer is successfully set up and almost ready to use.
- 📌 You can now start printing, but **we recommend continuing with the next few steps** to learn more and make sure you don't miss any important tips.

STEP 7 Connecting the Buddy3D Camera



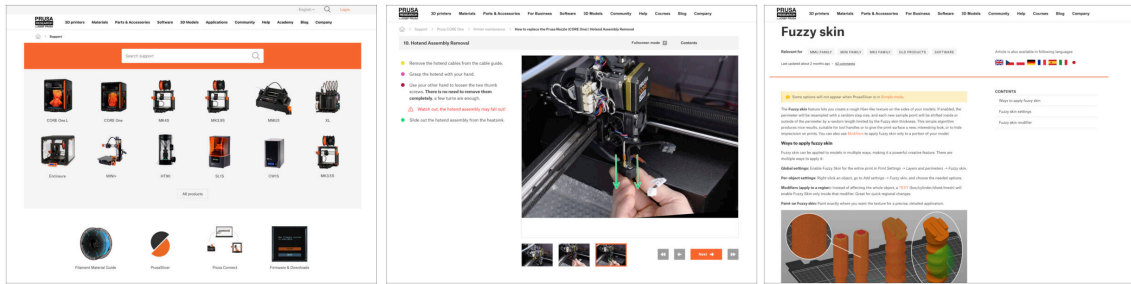
- To set up your Buddy3D Camera, check our article: [Buddy3D Camera](#)
- ① Activating the camera is optional and can be done at any time.
- Attach the camera's serial number sticker to the rear of the printer, positioned at the bottom, next to the printer's serial number sticker.






STEP 8 Handbook



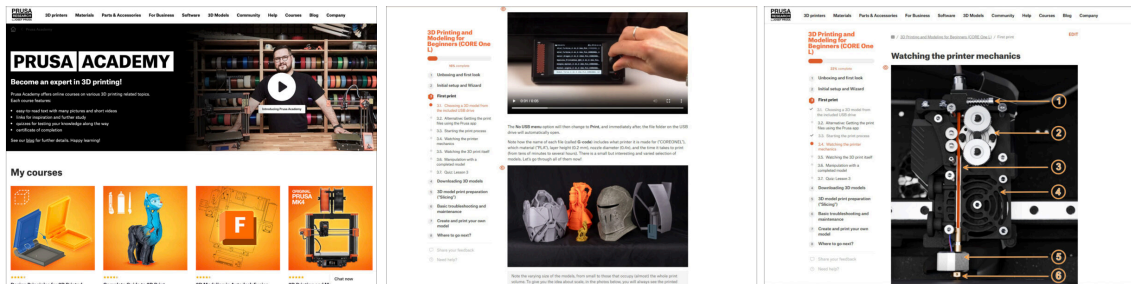
- Read the **3D Printing Handbook** dedicated to your printer and follow the instructions to set up the printer and prepare it for your first print.
- 📌 The latest version is always available at prusa.io/col.
- ⚠️ **Read the Disclaimer and Safety instructions chapters.**




STEP 9 Prusa Support



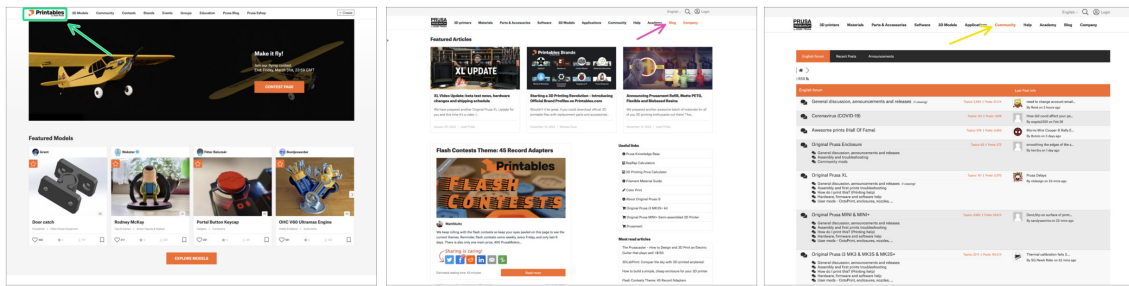
-  For help and additional resources, **visit our Support Center** at help.prusa3d.com.
-  Find software downloads, product manuals, and detailed assembly guides.
-  Access troubleshooting tips and solutions for common questions.
-  Explore tutorials and articles to help you get the most out of your printer.
-  We're adding new topics every day!

STEP 10 Prusa Academy



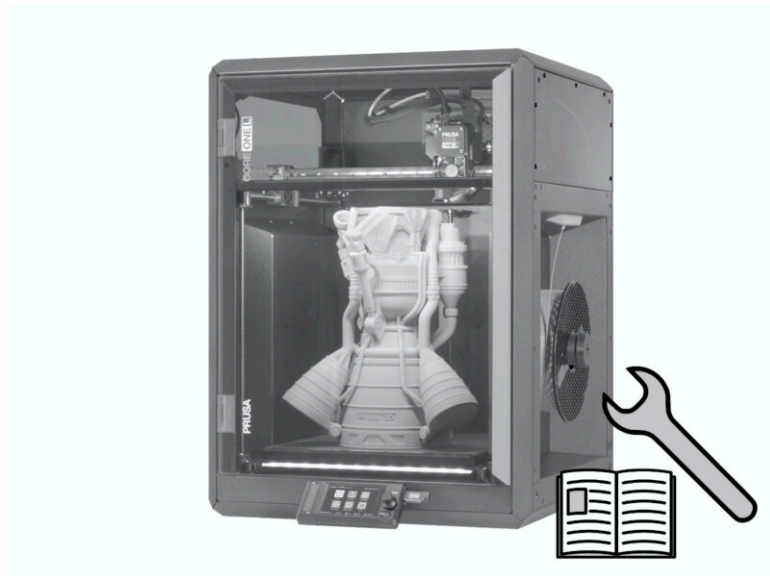
-  Want to take your 3D printing skills to the next level? The CORE One L course is free for all customers who purchased the printer + there are interactive courses on other topics on Prusa Academy.
-  Visit prusa.io/col-course and learn at your own pace!
-  All Prusa services are accessible with a single Prusa Account.

STEP 11 Join Printables!

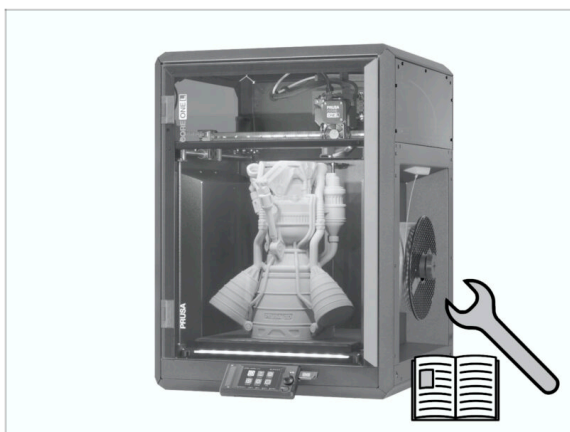


- Don't forget to join the biggest Prusa community! Download the latest models in STL or G-code tailored for your printer. Register at [Printables.com](https://www.printables.com)
- Looking for inspiration on new projects? Check our blog for weekly updates.
- If you need help with the build, check out our forum with a great community :-)
- i All Prusa services share one user account.

Manual changelog



STEP 1 Version history



- **Versions of the Prusa CORE One L manual:**
- 10/2025 - Initial version 1.00

This image shows a full page of blank, lined paper. It features approximately 20 evenly spaced horizontal grey lines across the entire width of the page, typical of standard notebook or composition paper. There are no margins, text, or other markings present.

Notes:

This image shows a full page of blank, lined paper. It features approximately 20 evenly spaced horizontal grey lines across the entire width of the page, providing a guide for writing. The background is a clean, solid white color. There are no margins, text, or other markings present.

[illegible]