

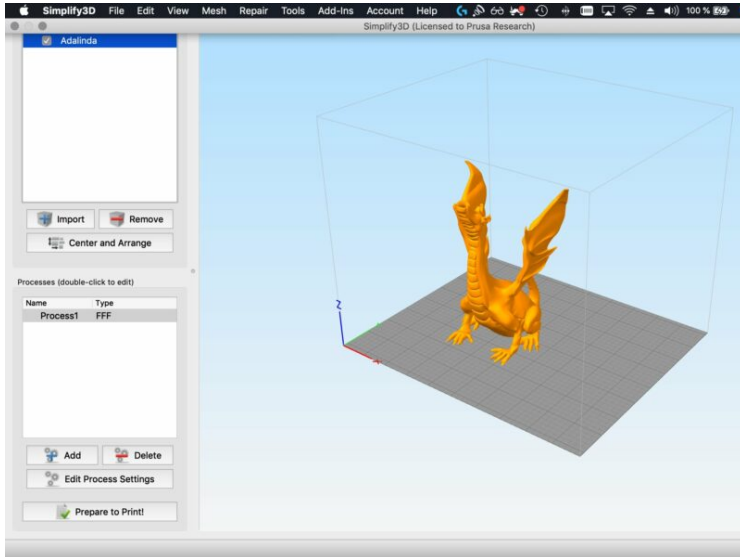
# Table of Contents

**How to import profiles to Simplify3D 4.x**  
**(Windows & macOS) ..... 3**

- Step 1 - Getting the Simplify3D profiles ..... 4
- Step 2 - What is inside the package? ..... 5
- Step 3 - Importing the profiles ..... 5
- Step 4 - Using the settings ..... 6



# How to import profiles to Simplify3D 4.x (Windows & macOS)

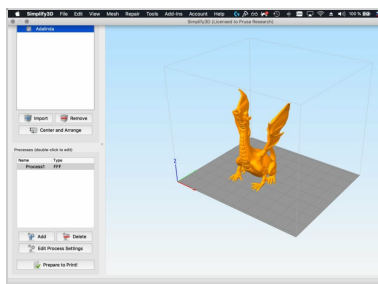


[help.prusa3d.com/g18360](https://help.prusa3d.com/g18360)

Scan the QR code to display the latest version of this chapter.



## STEP 1 Getting the Simplify3D profiles



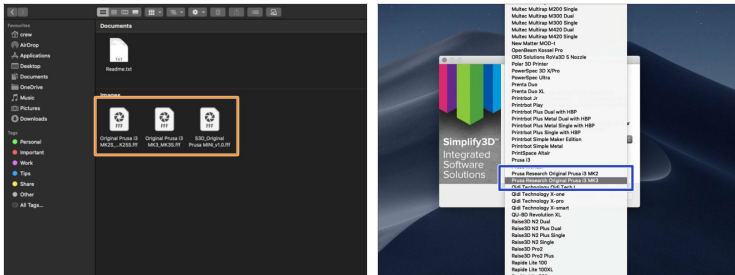
**⚠ WARNING:** Current profiles were tested on the **Simplify3D (S3D) 4.1.2** and we can not guarantee those will work on the older versions.

- The following guide will help you import and activate **custom profiles tweaked by Josef Prusa for your Original Prusa printer.**
- This guide is valid **both for Microsoft Windows and Apple macOS.**
- **Important:** latest profiles include settings for generic **PLA, ASA, ABS, PETG** as well as **Prusament.**
- **Supported printers:**
  - Original Prusa i3 **MK3S** and MK3
  - Original Prusa i3 **MK2.5S**, MK2.5 and MK2S
  - Original Prusa **MINI**
- [Click here to download the S3D package](#)

# How to import profiles to Simplify3D 4.x (Windows & macOS)

---

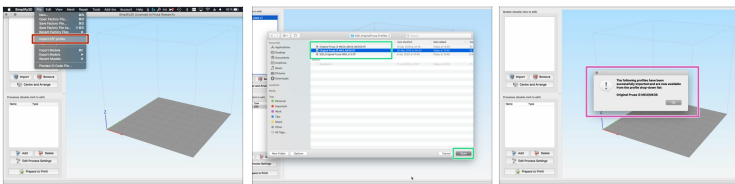
## STEP 2 What is inside the package?



- The package for S3D includes three config files, which will be imported in few clicks :)
- Make sure the Simplify3D is installed and running. The Prusa printers, which are in the list aren't officially supported, we will import the correct ones in the next step.

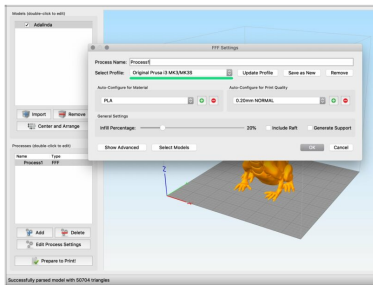
---

## STEP 3 Importing the profiles



- From the top menu select **File -> Import FFF profile**
- Head to the folder with downloaded profiles and select the one according to your printer.
- Wait for the S3D to confirm, the import was successful.

## STEP 4 Using the settings



Open the **Processes** dialogue and in **"Select Profile:"** select your Original Prusa printer.

**We are ready! Slice your model and give it a try ;)**



---

---

---

---

---

---

---

---

---

---



---

---

---

---

---

---

---

---

---

---



---

---

---

---

---

---

---

---

---

---